



Prince Albert Model Forest Ecosystem Based Integrated Resource Management Plan

Annual Review

January 1, 2000 – December 31, 2000

Prince Albert Model Forest
P.O. Box 2406
Prince Albert, Saskatchewan S6V 7G3
#103 – 1004 – 1st Avenue West
Phone: (306) 922-1944
Fax: (306) 763-6456
Email: pamf@pamodelforest.sk.ca
Website: www.pamodelforest.sk.ca

TABLE OF CONTENTS

Overview	1
1.0 Introduction	3
2.0 Coordination of Plan Implementation	7
3.0 Summary of Plan Review	8
3.1 Total Number of Actions and Commitments in the Prince Albert Model Forest Integrated Resource Management Plan	10
3.1.1 Total Number of Commitments for 2000	10
3.2 Actions By Initiating Agencies.....	12
3.3 Total Number of Commitments for 2000 by the Plan Sections.....	14
4.0 Commitment Dates and Completed Actions Up To 2000	15
4.1 Communications and Knowledge Exchange	16
Concern 1: Shared Information on Resource Management.....	16
Concern 3: Inclusion of other Interest Groups	17
Concern 4: Continued/Increased Public Input.....	17
4.2 Ecosystem Health.....	18
Concern 2: Protection of Rare and/or Endangered Plant and Wildlife Species.....	18
Concern 3: Health of Riparian Areas	19
Concern 4: Resource Use and Development in Sensitive Areas	19
Concern 5: Research.....	20
Concern 6: Protection of the Water Resource	21
Concern 7: Protect Ecological Integrity	21
Concern 8: Biodiversity	22
Concern 9: Impacts on the Natural Environment	22
Concern 10: Non-Native Species/Exotics	23
Concern 11: Forest Fragmentation due to Forestry	23
Concern 12: Water Control Structures	24
Concern 13: Conservation of Fish Resources	25
Concern 14: Conservation of Wildlife Resources	26
Concern 17: Hunting and Fishing Season Dates	28
Concern 20: Harvesting Methods (timber).....	28
Concern 21: Need for Reforestation.....	29
Concern 22: Fire.....	29
Concern 23: Forest Insect and Disease Management	30
Concern 24: Operating Ground Rules	30
Concern 25: Forestry Roads (access)	31
Concern 26: Forestry Roads (impacts-erosion).....	31
Concern 28: Forestry Roads (culvert sizing; fish bearing streams).....	31
Concern 32: Forestry Roads (closures)	32
Concern 36: Fire Salvage	32
Concern 37: Forestry Inventory	33
4.3 Integrated Resource Management.....	34
Concern 3: Aesthetic Buffers (around resort lakes and recreational rivers).....	34
Concern 4: Buffer Zones (Roads)	34
Concern 5: Buffer Zones (cabins)	35
Concern 6: Traditional Resource Use Cabins	35

	Concern 12: Sand and Gravel Quarries	35
	Concern 15: Need for Effective Enforcement Programs	36
	Concern 19: Trapping.....	36
	Concern 20: Need to Plan and manage so that Recreational Activities and Industrial Activities are not in Conflict	37
	Concern 24: Forestry Practices should Implement the Principles of Sustainable and Integrated Resource Management.....	37
	Concern 25: Protection/Respect of Traditional Use Areas.....	38
4.4	Local Level Indicators	39
	Concern 1: Criteria and Indicators	39
4.5	Values and Benefits	40
	Concern 2: Training and Education Opportunities for Aboriginal people in Resource Management.....	40
	Concern 4: Tourism/Eco-tourism.....	40
	Concern 5: Other Forest Products (e.g. berries, moss, wild rice, mushrooms, and medicines)	40
4.6	Implementation Strategies	41
	Key to Abbreviations	42
	Literature Cited	43

Overview

The Prince Albert Model Forest Ecosystem Based Integrated Resource Management Plan provides the partners of the Prince Albert Model Forest with direction on how to manage all uses and resources of the Prince Albert Model Forest area. To ensure the plan is implemented in accordance with the plan goal, principles and objectives, it is important to monitor the progress of plan implementation.

The Prince Albert Model Forest Ecosystem Based Integrated Resource Management Plan was intended to be an adaptive document, which would allow for change so that the plan could continually guide management decisions in the best possible direction. The Prince Albert Model Forest (2000) states that within the plan there are actions regarding the review and monitoring of the plan:

- Conduct yearly assessments of the plan with continued public input.
- Prepare a report, which provides the status of the Prince Albert Model Forest plan and area.
- Prepare a major evaluation of the plan in 2001.
- Comprehensive plan evaluation will be done every 5 years after 2001.

Purpose of the document

This document will provide information to the Prince Albert Model Forest partners and all interested groups and individuals on the implementation progress of the Prince Albert Model Forest Ecosystem Based Integrated Resource Management Plan for January 1, 2000 to December 31, 2000. It will show the public and the Prince Albert Model Forest partners what commitments have been met and not met in the implementation of the plan. Also, it will serve as an annual review or status report of the plan implementation progress. The information compiled in this document will be used in the 5-year major evaluation of the Prince Albert Model Forest Ecosystem Based Integrated Resource Management Plan.

This document will:

- Provide the commitment date of each action for the year 2000, including actions done prior to 2000, listed in the Prince Albert Model Forest Ecosystem Based Integrated Resource Management Plan;
- Provide information on how the plan is being implemented and the agencies or groups involved;
- Compile information on the implementation status of the Prince Albert Model Forest Ecosystem Based Integrated Resource Management Plan on an annual basis;

- Provide a summary of the overall status of the implementation for actions prior to and including the year 2000; and
- Identify any problems experienced with implementation of the plan, changes made, and why the changes were necessary.

Use of the Document

A review of the Prince Albert Model Forest Ecosystem Based Integrated Resource Management Plan will be conducted annually in which information on the implementation process will be collected. This information will then be used as input into the 5-year major evaluation of the Prince Albert Model Forest Ecosystem Based Integrated Resource Management Plan.

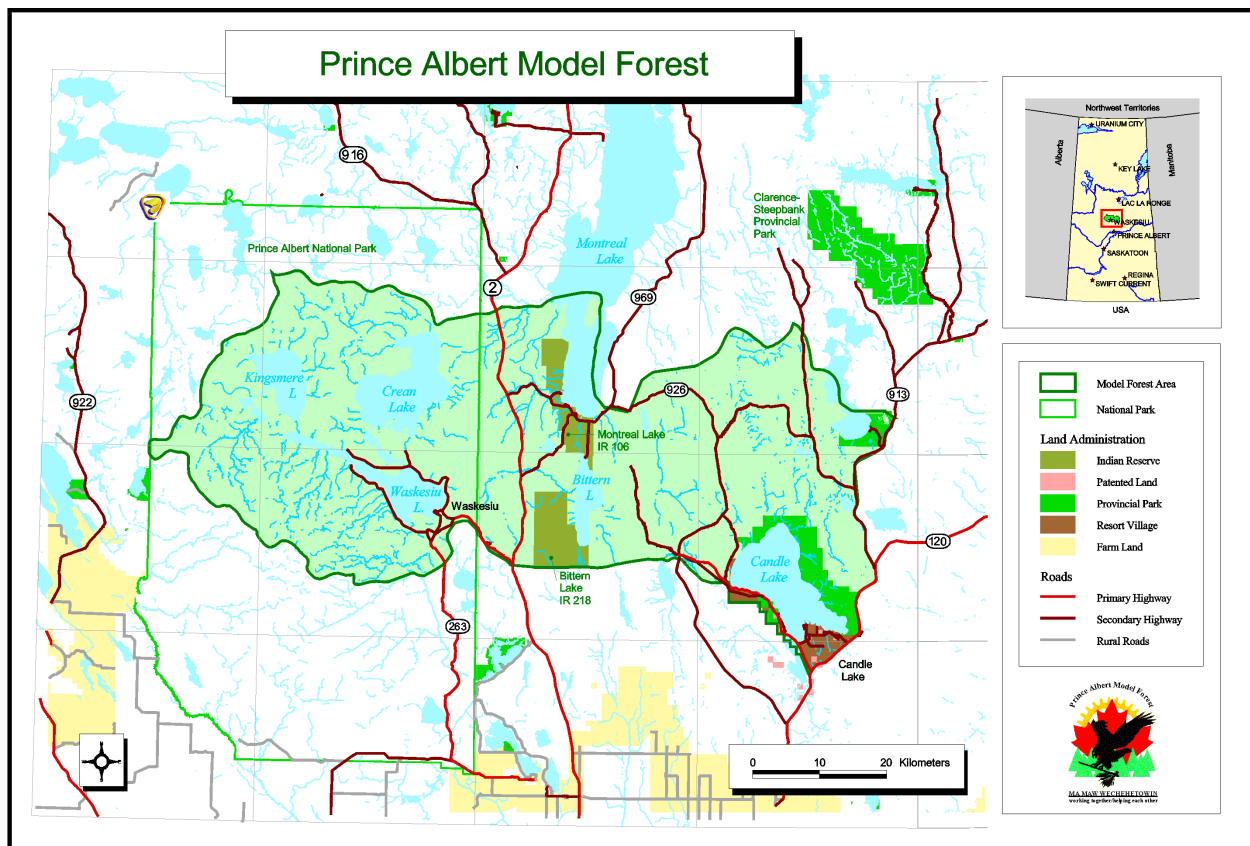
This document will be presented to the public for review and recommendations.

This document contains only actions with commitment dates prior to and including the year 2000, as well as any actions without commitment dates that have been initiated or completed. For a complete list of all the actions in the plan, see the Prince Albert Model Forest Ecosystem Based Integrated Resource Management Plan.

1.0 Introduction

The Prince Albert Model Forest (PAMF) is a nonprofit partnership of industry, local communities, First Nations, and federal and provincial resource management agencies, who are committed to the sustainability of Saskatchewan's forests through research, education and equitable sharing of the forests resources.

The Prince Albert Model Forest area covers 367, 034 hectares located in the Mid-Boreal Upland EcoRegion, approximately 70 km north of Prince Albert, Saskatchewan. The Prince Albert Model Forest area offers many benefits for residents, as well as the people of Saskatchewan. These benefits include timber for local industry, provisions for food and shelter, protected wilderness areas, and a setting for recreational pursuits, such as hunting, fishing, camping, and hiking.



Source: Prince Albert Model Forest.

The Prince Albert Model Forest is a member of the Canadian Model Forest Network, which consists of eleven model forests located across Canada. The Model Forest Network is an initiative in building partnerships locally, nationally, and internationally to generate new ideas and on-the-ground solutions to sustainable forest management issues.

Sustainable development of the forest industry requires the implementation of sustainable forest management through the planning processes of integrated resource management. Sustainable forest management is the responsible and sustainable use of our forest resources to conserve their

biodiversity, productive capacity, and ecological integrity while, at the same time, maintaining the social, cultural and economic benefits we derive from them.

Partners of the Prince Albert Model Forest

The Prince Albert Model Forest partnership consists of the Canadian Forest Service, Canadian Institute of Forestry, Federation of Saskatchewan Indian Nations, Saskatchewan Environment and Resource Management, Lac La Ronge Indian Band, Montreal Lake Cree Nation, Prince Albert National Park, Prince Albert Grand Council, Resort Village of Candle Lake, and Weyerhaeuser (Saskatchewan Forestlands). The Prince Albert Model Forest partners are committed to ensuring sustainable development of the forestlands. The partners recognize that effective long-term conservation and sustainable use of the forest will require a coordinated effort among various agencies and land users. Each partner contributes management responsibility for the forestlands and/or forest resources or knowledge. The contributions by each partner ensure that the best decisions will be made for sustainable forest management.

Goals of the Prince Albert Model Forest

The goals as stated by the Prince Albert Model Forest (1997) reflect the state and knowledge base of forest management:

- To ensure a sustainable and predictable supply of forest based ecological, social and economic benefits through the management of forest ecosystems.
- Raise awareness and demonstrate commitment to the concepts of sustainability, integrated resource management and ecosystem management among forest users, researchers, and managers at the local, regional, national, and international level.

Prince Albert Model Forest Ecosystem Based Integrated Resource Management Plan

In 1997, during Phase II of the model forest program, the Prince Albert Model Forest identified the need for a resource management plan to provide direction for the sustainable management of all resources and their use in the area. In 1998, the Integrated Resource Management working group of the Prince Albert Model Forest developed a formal planning framework and strategy for the Prince Albert Model Forest area. The 6 basic steps of the planning process were outlined in a brochure, which was distributed to all the people on the Prince Albert Model Forest mailing list, that live within or around the Prince Albert Model Forest area, provincial interest groups, and the organizations and individuals identified in the communications strategy.

In 1998, the Integrated Resource Management working group held public meetings in communities throughout the Prince Albert Model Forest area. A record of all of the comments and concerns from the public meetings was compiled in a document titled, “What We Thought We Heard”. This document was circulated to all the people that attended public meetings, the target groups identified in the communications strategy, media, Prince Albert Model Forest Board of Directors and working group chairs, and the contact people in each community that helped arrange the meetings.

In January 1999, the Integrated Resource Management working group invited over 100 outside organizations (all of the organizations that were known to the Prince Albert Model Forest; all names are held in the PAMF “contact list” database) to participate in the working group and the development of the model forest plan.

During September of 1999, a second round of public consultation meetings were held in the communities of the Prince Albert Model Forest area. The comments and concerns from this second round of public consultation meetings were recorded in the document “What We Thought We Heard 2”.

The comments and concerns heard during the two rounds of public consultation meetings were used as input into the plan.

In January 2000, there was a final review of the plan and commitments were made by the model forest partners and working groups. Each working group and partner was asked to review and commit, with an implementation date, to the actions identified in the plan, by January 21, 2000.

In March 2000, the Prince Albert Model Forest Ecosystem Based Integrated Resource Management Plan (Version 1.5 Final Draft) and the “What We Thought We Heard 2” document were sent to all of the people who attended the public meetings, were listed in the consultation strategy, or provided input into the process. Also, the Final Draft of the Prince Albert Model Forest Ecosystem Based Integrated Resource Management Plan (Version 1.5) was submitted to the Prince Albert Model Forest Board of Directors for approval.

In March 2000, the Prince Albert Model Forest Ecosystem Based Integrated Resource Management Plan was approved by the Prince Albert Model Forest Board of Directors.

On January 23, 2001, the Prince Albert Model Forest Ecosystem Based Integrated Resource Management Plan was officially signed by each of the ten partners of the Prince Albert Model Forest in a signing ceremony held during the First Nation Forestry Program conference in Saskatoon, Saskatchewan.

Plan Principles

The principles of the Prince Albert Model Forest Ecosystem Based Integrated Resource Management Plan are based upon the values held by the model forest partners and the public. Principles are rules that guide how an activity will be carried out. These principles have guided the development of the Prince Albert Model Forest Ecosystem Based Integrated Resource Management Plan. The plan principles as stated by the Prince Albert Model Forest (2000) are:

- The rights, privileges and responsibilities of the partners and other users in the Prince Albert Model Forest area will be respected.
- All those who benefit from the resources of the Prince Albert Model Forest will:
 - have the opportunity to tell us what they want;
 - learn what we have learned, and;
 - know what is planned before finalization.

- Consider all values when making management decisions.
- Respect the interests of Aboriginal people, including existing Métis and Treaty rights.
- Use traditional, local and scientific knowledge to make management decisions.
- Promote the needs and wishes of the Prince Albert Model Forest partners, and the local residents and communities.
- Support land and resource uses that are environmentally, economically and socially sustainable.
- Protect the ecosystem's primary resources (e.g. air, land and water)
- Recognize and respect traditional land uses.
- Maintain the ecological integrity, health and sustainability of the area's ecosystems by ensuring:
 - negative effects from all uses are minimized;
 - native biological diversity is maintained at a natural level;
 - renewable resources are used in a sustainable fashion, and;
 - non-renewable resources are used in a responsible manner.

Plan Goal

The plan goal as stated by the Prince Albert Model Forest (2000) is:

To manage all uses and resources of the Prince Albert Model Forest area on an integrated and ecosystem basis, to ensure ecological, economic and cultural benefits for present and future generations.

Plan Objectives

The plan objectives as stated by the Prince Albert Model Forest (2000) are:

- Apply the principles of Integrated and Ecosystem Based Management to land use and resource management activities in the Prince Albert Model Forest area.
- To provide a framework that integrates other plans covering the Prince Albert Model Forest area.
- Develop clear land use guidelines that allow for controlled, orderly use and development.
- Identify additional areas where planning, integration, study or research are needed.
- Provide guidelines for public input into land and resource management decisions.
- Provide mechanisms to minimize and resolve conflict among all users.
- Establish procedures to monitor the implementation and effectiveness of the plan, and provide a process to ensure the plan is reviewed and revised on a regular basis, or when new circumstances or information are available.
- Encourage sustainable use and benefits from all resources in the planning area.

2.0 Coordination of Plan Implementation

The Integrated Resource Management working group of the Prince Albert Model Forest will oversee the implementation and monitoring of the plan.

The current Integrated Resource Management Working Group members are:

Tom Ballantyne	Canadian Institute of Forestry
Cliff Buettner	Prince Albert Grand Council
Fred Charles	Lac La Ronge Indian Band
Kim Clark	Saskatchewan Environment and Resource Management
Sharon Desjarlais	Prince Albert Model Forest
Henry Desjarlais	Saskatchewan Environment and Resource Management
Ivor Edwards	Canadian Forest Service
Denis Engele	Saskatchewan Environment and Resource Management
Hamilton Greenwood	Nature Saskatchewan
Ed Henderson	Montreal Lake Cree Nation
Jack Keel	Saskatchewan Environment and Resource Management
Chris LaPlante	Federation of Saskatchewan Indian Nations
Kerry McIntyre	Weyerhaeuser Canada, Saskatchewan Forestlands
Clint Mauthe	Resort Village of Candle Lake
Peter Mizanski	Saskatchewan Northern Affairs
Ott Naelapea	Prince Albert Model Forest
Todd Olexson	Saskatchewan Environment and Resource Management
Delilah Pasap	Montreal Lake Cree Nation
Larry Stanley	Saskatchewan Environment and Resource Management
Norm Stolle	Prince Albert National Park
Dick Tataryn	RM of Lakeland
John Thompson	Saskatchewan Environment and Resource Management

Information may be obtained by contacting:

Sharon Desjarlais
Prince Albert Model Forest
(306) 763-2347

3.0 Summary of Plan Review

This section provides a summary of the review of the actions listed in the Prince Albert Model Forest Ecosystem Based Integrated Resource Management Plan.

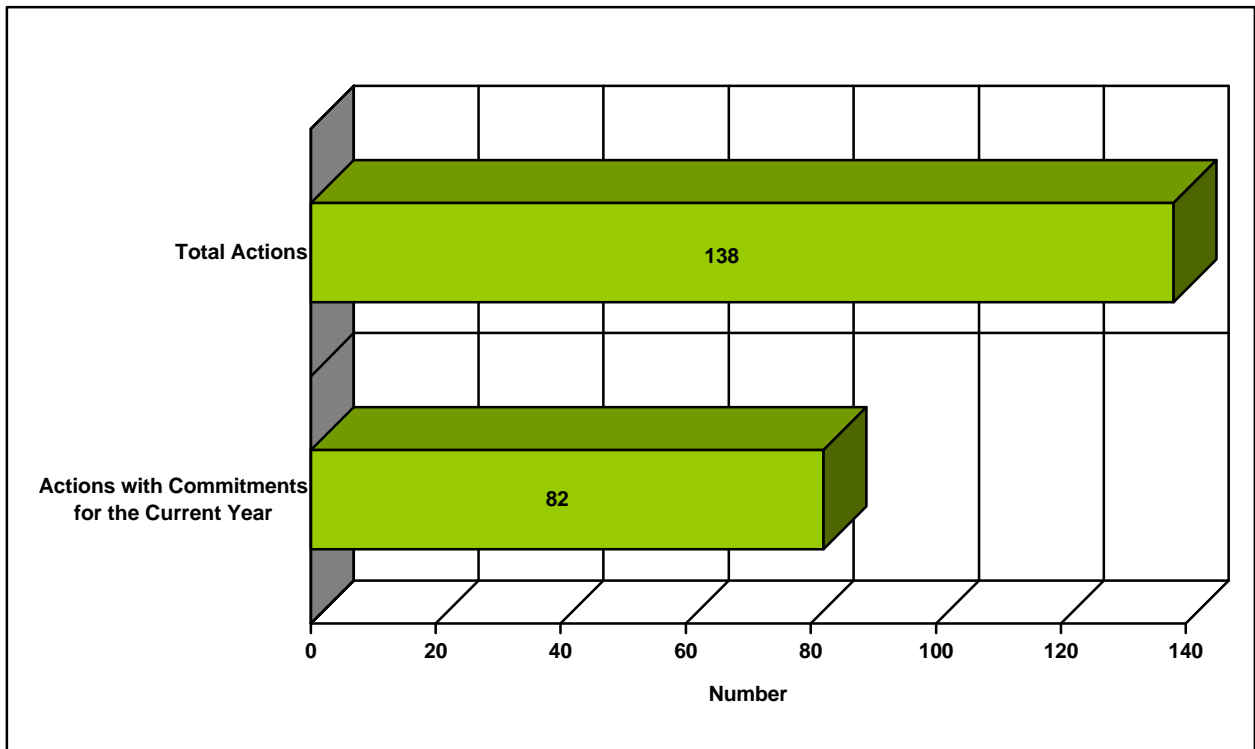
Actions, which are identified in the plan, are items to be worked on. Commitment dates are dates for actions to be initiated or completed by and are provided by the agencies responsible for the action.

Table 3.0 and Figure 3.0 show the total actions in the plan and the actions with commitment dates prior to and including the 2000 calendar year.

Table 3.0: Plan Actions and Commitment Dates

Total Actions	Actions with Commitments for the Current Year
138	82

Figure 3.0: Plan Actions and Commitment Dates



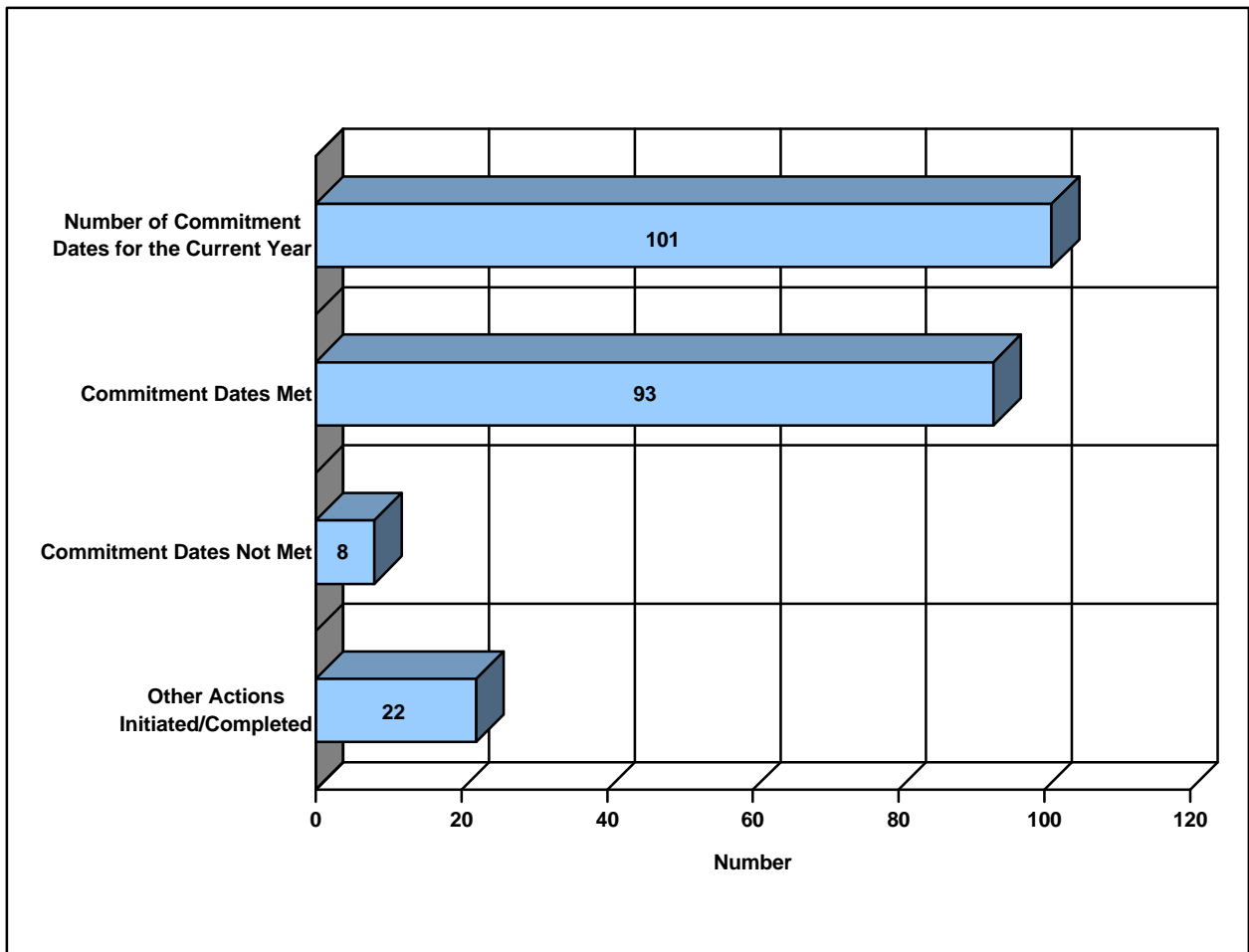
The actions in the plan may list one or more initiating agencies as the lead for implementing an action. Therefore, the total number of commitment dates (with actions to be initiated or completed) for the current year is greater than the total number of actions with commitments for the current year.

Table 3.01 and Figure 3.01 show the total number of commitment dates for all initiating agencies and the number of commitment dates met and not met and the number of other actions initiated or completed in the current year of 2000.

Table 3.01: Total Number of all Initiating Agency Commitments Up to 2000

Number of Commitment Dates for the Current Year	Commitment Dates Met	Commitment Dates Not Met	Other Actions Initiated/Completed
101	93	8	22

Figure 3.01: Total Number of all Initiating Agency Commitments Up to 2000



3.1 Total Number of Actions and Commitments in the Prince Albert Model Forest Ecosystem Based Integrated Resource Management Plan

There are a total of 138 actions in the plan. The actions in the plan may list one or more initiating agencies as the lead for implementing an action. Therefore, the sum of the total number of actions in the plan for each initiating agency will be greater than the total number of actions listed in the plan.

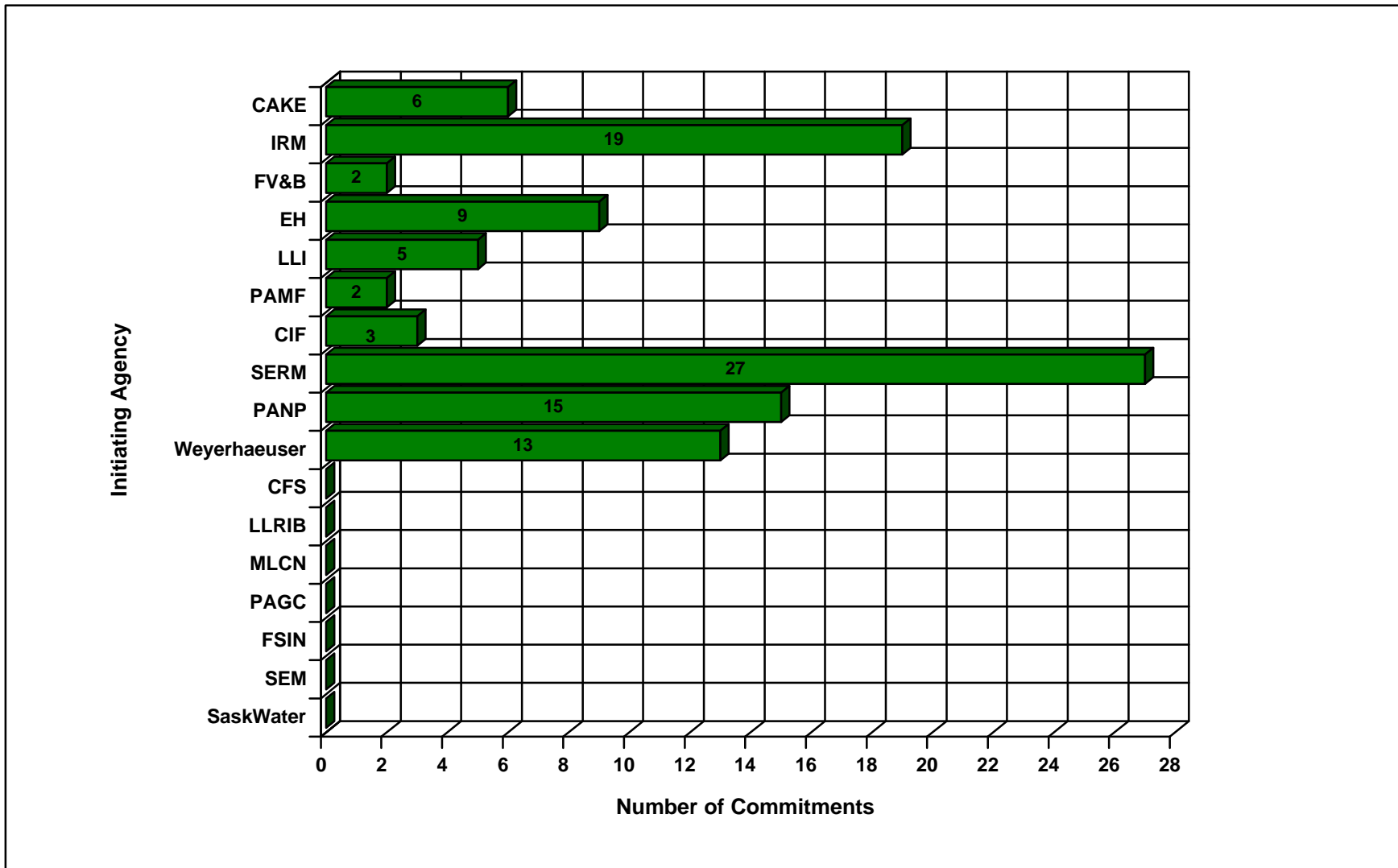
Table 3.1: Total Number of Actions and Commitment Dates for 2000 for each Initiating Agency

Initiating Agency or Group	Number of Actions in the Plan for each Initiating Agency	Number of Commitment Dates for the Current Year
Communications & Knowledge Exchange Working Group	20	6
Integrated Resource Management Working Group	38	19
Forest Values & Benefits Working Group	5	2
Ecosystem Health Working Group	24	9
Local Level Indicators Working Group	10	5
Prince Albert Model Forest	7	2
Canadian Institute of Forestry	27	3
Saskatchewan Environment & Resource Management	91	27
Prince Albert National Park	56	15
Weyerhaeuser Canada Ltd., Saskatchewan Timberlands	55	13
Canadian Forest Service	27	0
Lac La Ronge Indian Band	26	0
Montreal Lake Cree Nation	26	0
Prince Albert Grand Council	25	0
Federation of Saskatchewan Indian Nations	25	0
Saskatchewan Energy & Mines	1	0
SaskWater	1	0
TOTAL	464	101

3.1.1 Total Number of Commitments for 2000

There are a total of 82 actions with commitment dates prior to and including the year 2000. Some actions have one or more initiating agencies listed as the lead for implementing an action; therefore the total number of commitment dates for the current year is 101. Figure 3.1.1 shows the number of commitments each initiating agency has for the year 2000.

Figure 3.1.1: Number of Commitments for 2000 by Initiating Agency



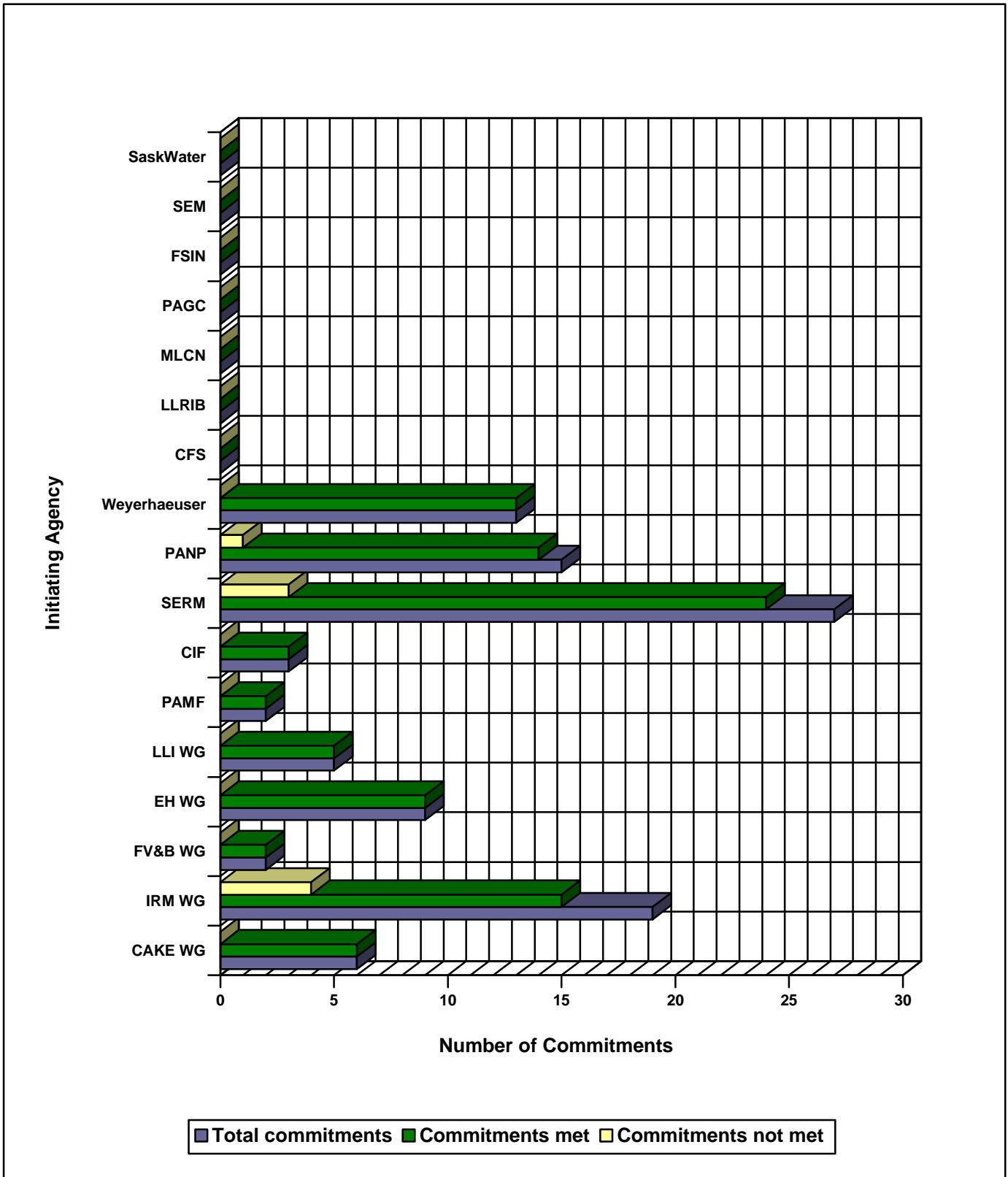
3.2 Actions By Initiating Agencies

The number of actions and commitments for 2000 for each initiating agency or group are shown in Table 3.2 and Figure 3.2.

Table 3.2: Status of Commitments for 2000 by Initiating Agency

Initiating Agency/Group	Number of Commitments for 2000	Number of Actions with Commitment Dates Met	Number of Actions with Commitment Dates Not Met	Other Actions Initiated/ Completed
Communications & Knowledge Exchange Working Group	6	6	0	0
Integrated Resource Management Working Group	19	15	4	0
Forest Values & Benefits Working Group	2	2	0	0
Ecosystem Health Working Group	9	9	0	0
Local Level Indicators Working Group	5	5	0	0
Prince Albert Model Forest	2	2	0	1
Canadian Institute of Forestry	3	3	0	1
Saskatchewan Environment & Resource Management	27	24	3	6
Prince Albert National Park	15	14	1	0
Weyerhaeuser Canada Ltd., Saskatchewan Timberlands	13	13	0	14
Canadian Forest Service	0	0	0	0
Lac La Ronge Indian Band	0	0	0	0
Montreal Lake Cree Nation	0	0	0	0
Prince Albert Grand Council	0	0	0	0
Federation of Saskatchewan Indian Nations	0	0	0	0
Saskatchewan Energy & Mines	0	0	0	0
SaskWater	0	0	0	0
TOTAL	101	93	8	22

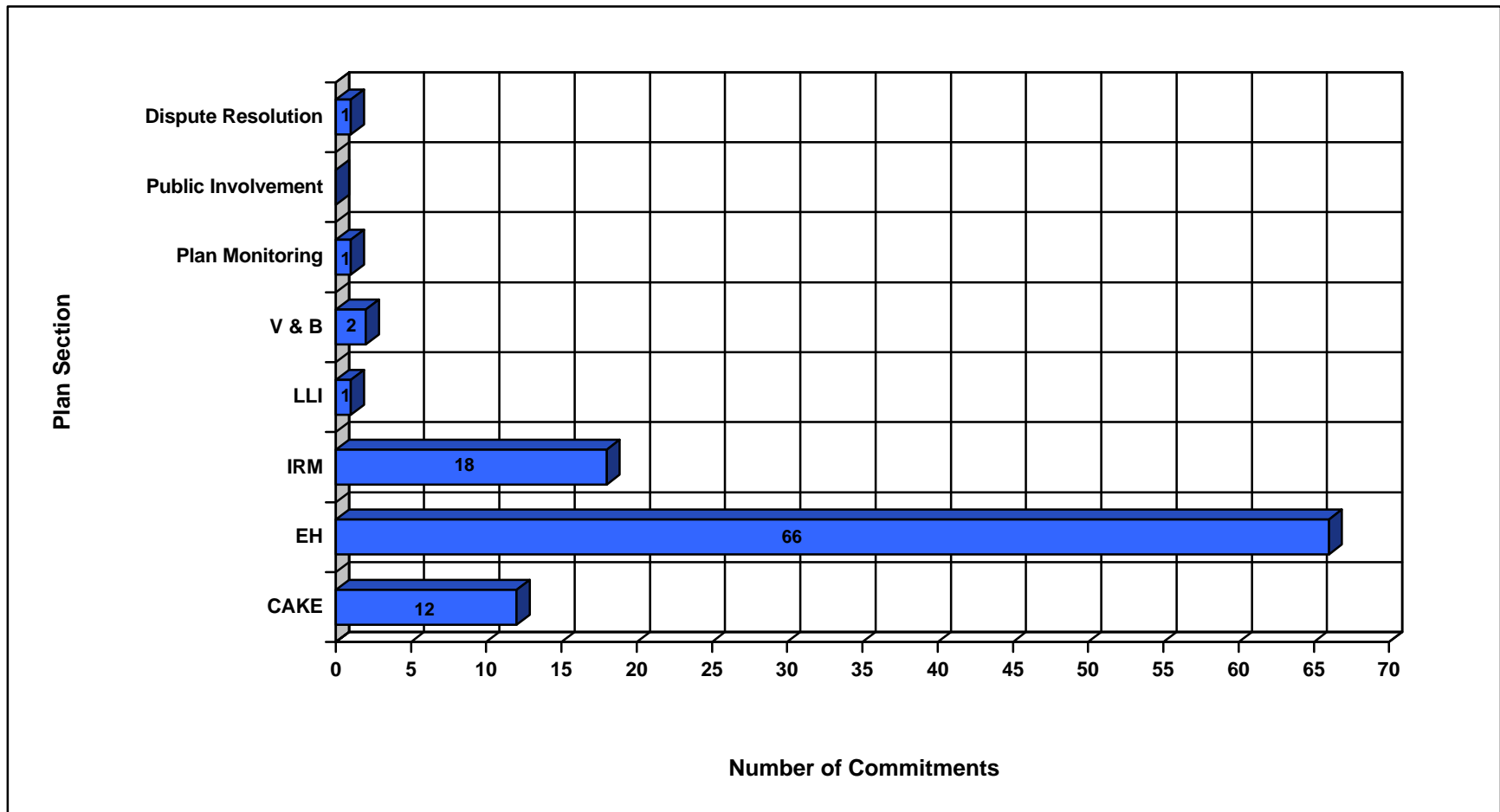
Figure 3.2: Status of Commitments for 2000 by Initiating Agency



3.3 Total Number of Commitments for 2000 by the Plan Sections

This section shows the total number of commitments each initiating agency has in each of the plan sections for the year 2000.

Figure 3.3: Number of Commitments for 2000 by the Plan Sections



4.0 Commitment Dates and Completed Actions Up To 2000

This section lists the completed actions and the actions for the year 2000 from the Prince Albert Model Forest Ecosystem Based Integrated Resource Management Plan in the order that they appear in the plan.

Actions, which are identified in the plan, are items to be worked on. Commitment dates are dates for actions to be initiated or completed by and are provided by the agencies responsible for the action.

Agencies highlighted in ***BOLD italics*** are the lead agency for the action.

The 'comments' column provides more detail about the current status of the action.

In 2000, some of working groups of the Prince Albert Model Forest underwent a re-organization, as a result the Forest Values and Benefits (FVB) working group and the Integrated Resource Management (IRM) working group have combined into the Integrated Resource Management working group. The Ecosystem Health (EH) working group and Local Level Indicators (LLI) working group have combined to become the Ecosystem Health/Local Level Indicators working group.

4.1 Communications and Knowledge Exchange

Concern 1: Shared Information on Resource Management

Action	Initiating Agency	Commitment Date	Commitment Date Met Y/N	Comments
Develop a communications and knowledge exchange strategy for the model forest (including the individual partners) to help ensure that information is shared with the partnership, other land users and interested organizations and individuals. (How is the PAMF and its partners to communicate and exchange knowledge? What knowledge do we exchange, and how do we find out?)	<i>CAKE</i>	Complete April, 2000 distribute and begin implementing strategy	CAKE-Yes	CAKE - The CAKE 2000-2001 work plan includes specific actions aimed at target audiences, including partners, and measures of success.
Provide descriptions of what information is available/used by the Prince Albert Model Forest	PAMF, <i>CAKE</i> , <i>CIF</i>	Ongoing (newsletters, web site, public events)	PAMF-Yes CAKE-Yes CIF-Yes	CAKE-Information activities of the Prince Albert Model Forest are included in the "Forest Times" newsletter, "What's Happening" fax out, etc. CIF – Co-sponsors with the Prince Albert Model Forest.
Provide GIS familiarization to the Prince Albert Model Forest partners and other organizations. To enable sharing of spatial databases.	<i>IRM</i> , <i>CAKE</i>	Implemented 1999 Ongoing, at least once a year	IRM-No	IRM – There was no formal presentation.
Develop data storage and management protocols so that information may be shared more easily between the partners.	<i>IRM</i> , Partners	Complete August, 2000 and proceed to implement	IRM-No	IRM – The initial direction was too complicated. A simplified approach is to be initiated by March 31, 2001.

Concern 3: Inclusion of other Interest Groups

Action	Initiating Agency	Commitment Date	Commitment Date Met Y/N	Comments
All working groups will assess the need for input by individuals and organizations outside of the model forest partnership.	<i>CAKE, FVB, EH, LLI, IRM</i>	IRM-FVB-Completed January, 1999 CAKE-April, 2000 LLI-EH-Completed involve researchers as needed	CAKE-Yes IRM-FVB-Yes LLI-EH-Yes	CAKE – Involves others as required by circumstances, e.g., discussions with Aboriginal Peoples Television Network about programming features model forests. IRM-FVB – IRM has an open chair working group; baiting research; and species at risk proposed next fiscal year. LLI-EH - The EH/LLI Working Group is undertaking a Riparian Harvest Study that includes involvement from researchers outside the PAMFA partners.

Concern 4: Continued/Increased Public Input

Action	Initiating Agency	Commitment Date	Commitment Date Met Y/N	Comments
Provide opportunities for the public to comment on or learn of the activities of the Prince Albert Model Forest.	<i>CAKE, CIF</i>	Ongoing	CAKE-Yes CIF-Yes	CAKE – Normal communications tools, avenues allow this opportunity. CIF – Co-sponsored workshop with the Prince Albert Model Forest.

4.2 Ecosystem Health

Concern 2: Protection of Rare and/or Endangered Plant and Wildlife Species

Action	Initiating Agency	Commitment Date	Commitment Date Met Y/N	Comments
Expand the current inventory of endangered species (Plant & Animal).	<i>SERM, PANP</i>	SERM-establish web site 2000-2001 to allow capture and distribution of information PANP- as species are identified, they are added to list, 5 year review in 2003	SERM-Yes	SERM - Web page created in 1997-1998 that allowed the distribution of endangered species information. 2000 added a Data Submission Form to assist in collecting information. (www.biodiversity.sk.ca).
Develop/promote a rare and endangered species sighting process in the PAMF area and the province. All information collected should be shared with the Prince Albert Model Forest partners and the Saskatchewan Conservation Data Center.	<i>EH, CAKE, SERM, PANP</i>	SERM-establish web site 2000-2001 to allow capture and distribution of information	SERM-Yes	SERM-Web page created in 1997-1998 that allowed the distribution of endangered species information. 2000 added a Data Submission Form to assist in collecting information. (www.biodiversity.sk.ca). SERM/MLCN - 2000 initiated an Elk and Woodland Caribou sighting program as part of the elk relocation project.
Develop a report on the current status of Woodland Caribou.	<i>SERM</i>	Complete 2000	SERM-Yes	SERM - Provincial status report completed 2000.

Concern 3: Health of Riparian Areas

Action	Initiating Agency	Commitment Date	Commitment Date Met Y/N	Comments
Develop and test standards to classify riparian zones.	EH, <i>Weyerhaeuser</i>	Completed 1997	Weyerhaeuser-Yes	
Evaluate various riparian area harvesting methods, and monitor their effects. The intent will be to assess current harvesting methods and/or develop new harvesting methods. Specific operating procedures for sustainable harvesting of stream side and riparian areas will be developed for use, within, and outside of, the model forest area.	Weyerhaeuser, <i>EH, SERM</i>	Initiated 1999 Continue 2001	EH-Yes SERM-Yes Weyerhaeuser-Yes	SERM-With the approval of the Weyerhaeuser 20 year plan and operating guidelines. Weyerhaeuser – Guidelines are being developed as a 20 year plan condition.

Concern 4: Resource Use and Development in Sensitive Areas

Action	Initiating Agency	Commitment Date	Commitment Date Met Y/N	Comments
PAMF and partners to work cooperatively within the partnership, and with others, to identify and protect areas which are sensitive and require some form of protection.	<i>EH, SERM, PANP, Partners</i>		Weyerhaeuser-Yes	Weyerhaeuser – Ongoing through LSAC's and stakeholder consultation.
In consultation with all land users, First Nations, Métis, scientists/researchers, interested groups and individuals, develop a set of guidelines, that identify timber harvesting and silvicultural objectives to address avoiding disturbance to rare and endangered species and ecosystems, critical habitat areas for fish and wildlife, wildlife travel routes, heritage/culturally significant areas, special use sites (e.g. medicinal plants), sacred sites, and other development sensitive areas.	<i>SERM, Weyerhaeuser</i>	With implementation of Weyerhaeuser Operating Guidelines - 2000	SERM-No	SERM - Weyerhaeuser 20 year plan approval in 2001, operating guidelines will follow. Weyerhaeuser - Ongoing

Develop and maintain, with input from all land users, Aboriginal people, scientists/researchers, interested groups and individuals, a comprehensive database of non-timber uses and resources.	<i>SERM, FVB, Weyerhaeuser, IRM, Partners</i>	Initiated 1998 Update December, 2000	IRM-FVB-Yes Weyerhaeuser-Yes	IRM-FVB - Ongoing data collection. Weyerhaeuser – ongoing (LSAC’s).
Develop ecosystem based management plans for all protected areas (i.e. Candle Lake Provincial Park, Prince Albert National Park). These plans should consider the ecosystem relationships beyond the human made boundaries of the area, allow natural processes to function where possible, and conserve ecological integrity and biological diversity. The planning process should also include an acceptable public consultation process.	<i>SERM, PANP, EH</i>	Candle Lake Provincial Park Vegetation Management Plan 2001; Park Management Strategy 2003 Prince Albert National Park Initiate February, 2000 Draft expected January, 2001	PANP-Yes SERM-Yes	PANP - Management planning process for the Prince Albert National Park is underway. Some delays due to federal election. Public consultation occurring. SERM - work is continuing on the Candle Lake Provincial Park Vegetation Management Plan.

Concern 5: Research

Action	Initiating Agency	Commitment Date	Commitment Date Met Y/N	Comments
Link collaboratively with other research centers	<i>PAMF</i>	Ongoing	PAMF-Yes	
Provide a forum or mechanism for PAMF to disseminate information gained through research	<i>CAKE, CIF</i>	Ongoing (newsletters, web site, public events) Complete Communication Knowledge Exchange Strategy April, 2000 distribute and begin implementing strategy	CAKE-Yes CIF-Yes	CAKE – The Forest Times newsletter is the main tool, e.g., articles on riparian zone management, CVX avian survey. CIF – Co-sponsored workshops with the Prince Albert Model Forest.

Concern 6: Protection of the Water Resource

Action	Initiating Agency	Commitment Date	Commitment Date Met Y/N	Comments
Develop and maintain a water quality and quantity (of use) monitoring program to identify trends, develop indicators and baseline data, and to ensure the level of use is sustainable.	<i>SERM, PANP, Sask Water</i>	SERM-Initiate 2000-2001 PANP-Initiated indicator lakes being used. Focus on Kingsmere, Crean, Wassegam Lakes and Kingsmere and McLennan Rivers	SERM-Yes	SERM - Plan to initiate a water quality monitoring program on a watershed basis in 2001. Candle Lake water quality assessment report 1995. Study of land and water use at Emma & Christopher Lakes.
Develop watershed management plans for the Prince Albert Model Forest (across all jurisdictions). Plans should include strategies for dealing with the potential for climate change.	<i>SERM, PANP</i>	SERM-Initiate 2000-2001 PANP-Initiate February, 2000 expected draft January 2001	PANP-Yes	PANP - Watershed management plans for the Prince Albert National Park will be part of the Park Management Plan.

Concern 7: Protect Ecological Integrity

Action	Initiating Agency	Commitment Date	Commitment Date Met Y/N	Comments
Investigate, develop and test indicators to monitor ecological integrity in the PAMF area.	<i>LLI</i>	Develop list of indicators of sustainable forest management 1999-2000 Sample for baselines 2000-2001	LLI - Yes	

Concern 8: Biodiversity

Action	Initiating Agency	Commitment Date	Commitment Date Met Y/N	Comments
Investigate, develop and test indicators to monitor biological diversity in the PAMF area.	<i>LLI</i>	Develop list of indicators of sustainable forest management 1999-2000 Sample for baselines 2000-2001	LLI-Yes	LLI - The EH/LLI Working Group has developed an initial list of C&I and have assigned them to one or more of the partners. Due to other commitments, baseline information will be forthcoming in the next fiscal.

Concern 9: Impacts on the Natural Environment

Action	Initiating Agency	Commitment Date	Commitment Date Met Y/N	Comments
Develop a monitoring program to assess the impacts of all resource uses.	<i>LLI</i>	Develop list of indicators of sustainable forest management 1999-2000 Sample for baselines 2000-2001	LLI-Yes	LLI - The EH/LLI Working Group has developed an initial list of C&I and have assigned them to one or more of the partners. Due to other commitments, baseline information will be forthcoming in the next fiscal. Now that the PAMFA has an IRM plan, a monitoring program can be established with respect to this. This will happen over the next fiscal.
Inform the public in reclamation activities to increase public awareness of responsible resource management.	<i>CAKE</i> , Partners	Complete public involvement standard operating procedure January, 2001 begin to implement	Weyerhaeuser-Yes	Weyerhaeuser – through LSAC's.

Concern 10: Non-Native Species/Exotics

Action	Initiating Agency	Commitment Date	Commitment Date Met Y/N	Comments
Identify regionally non-native species to the PAMF area.	SERM, PANP, EH	Preliminary Work completed January, 2000 Continue 2000	PANP-Yes EH-Yes	PANP - Preliminary work completed by the land use students at U of S. Wade Summers completed first field season for his research.
Monitor/study the spread and movement of exotic species in the PAMF area.	EH	Initiate 2000	EH-Yes	
Determine if existing exotic species have the potential to threaten the ecosystem integrity of the PAMF area, if they do, then determine how to control these species and reclaim the impacted area.	EH	Initiate 2000	EH-Yes	
Research existing and develop new methods of controlling exotic species. Test document and monitor these methods in the PAMF area for use in other areas.	EH, Partners			SERM - Provincial trial using pelleted deer baits initiated in 2000.

Concern 11: Forest Fragmentation due to Forestry

Action	Initiating Agency	Commitment Date	Commitment Date Met Y/N	Comments
Research, develop and test harvesting patterns in the PAMF area to better understand how forestry operations can emulate natural disturbances.	EH, Weyerhaeuser	Workshop held February 1999, for the Weyerhaeuser Two-Forks Planning Area	EH-Yes Weyerhaeuser-Yes	Weyerhaeuser - ongoing

Investigate, develop and test tools to monitor and assess landscape patterns and fragmentation (compared to natural disturbance) in order to assess current landscape patterns and suggest the practices and patterns that should be used.	<i>IRM</i> , Weyerhaeuser, <i>SERM</i>	Preliminary Research September 2000 Reevaluation in 1 year (January 2001)	IRM-Yes Weyerhaeuser-Yes	IRM – Continue to be involved with partners in testing of model in 2000. Build a ‘toolbox’. Weyerhaeuser – In development as part of the 20 year plan.
--	--	---	---------------------------------	---

Concern 12: Water Control Structures

Action	Initiating Agency	Commitment Date	Commitment Date Met Y/N	Comments
Inventory and assess the impacts (to the environment and users) of all water control structures impacting the PAMF area.	<i>SERM, PANP</i>	<i>SERM</i> -Complete 2002 <i>PANP</i> -Kingsmere complete Basic summary completed for Crean & Waskesiu	<i>PANP</i> -Yes	<i>PANP</i> - Kingsmere is complete and the water control structure has been removed. Information acquired from this project will be applied to others. Summary of concerns for other structures have been identified.
Continue the process of restoring the Kingsmere River and Lake ecosystems, including the removal of the Kingsmere River dam, and taking action to restore the river’s original natural characteristics.	<i>PANP</i>	Restoration Began 1996 1998 filling of diversion 1999 removal of dam	<i>PANP</i> -Yes	<i>PANP</i> - Dam removed fall of 1999. Continue to monitor to determine level of success in achieving specified goals. Still need to finish restoration of beach ridge and old road.
Monitor populations of both harvested and non-harvested fish species in those aquatic systems that can provide benchmark research on, and interpretations of the health of other aquatic systems in the regional ecosystems.	<i>PANP</i>	<i>PANP</i> 1997 Walleye and Northern Pike monitoring on Mud Creek 1999 Lake Trout monitoring	<i>PANP</i> -Yes	<i>PANP</i> - Monitoring as identified in the plan was carried out in 1999 and 2000.
All steps of the process and the effects of removing the Kingsmere River Dam should be documented and the information shared to establish whether other water control structures in the area should be removed.	<i>PANP, SERM</i>	Spring 2000 baseline was established prior to dam removal	<i>PANP</i> -Yes	<i>PANP</i> - Monitoring of biological and social factors completed in 2000.

Concern 13: Conservation of Fish Resources

Action	Initiating Agency	Commitment Date	Commitment Date Met Y/N	Comments
Identify and review all fisheries harvest levels and populations to determine if the fishery is sustainable.	<i>SERM, PANP</i>	Ongoing	SERM-Yes PANP-No	SERM - Bittern Lake fish population study done in 2000; Candle Lake Angler Survey (creel census) 2000; Fisher Creek spawning run 1999; Candle Lake, walleye with radio transponders being monitored to help identify fish movements and spawning areas. PANP - It is impossible to monitor all of the harvested populations. The Park is monitoring representative populations and key species.
Develop lake management plans for heavily used, over allocated, unique lakes, and others to manage the fishery in the best possible fashion. These management plans should include consultation with resource users, First Nations, Métis, interested groups and individuals.	<i>SERM, PANP</i>	SERM-Ongoing Candle Lake 2003 Montreal/Bittern Lake - 2005 PANP-Aquatic Ecosystem Management Plan developed in 1989	SERM-Yes PANP-Yes	SERM – Continue discussions with Candle Lake Fish Advisory Committee. PANP - Aquatics management plan completed in 1989. Park management plan is proposing to set aside representative and benchmark lakes.
Increase the inventory programs for fish resources and aquatic ecosystems, to improve knowledge of local habitats (e.g. critical spawning areas). This information should be included in databases that can be used to plan commercial and industrial operations and developments so sensitive areas are not impacted.	<i>SERM, PANP</i>	Spawning run Inventories Montreal Lake 2000 Candle Lake 2000	SERM-Yes	SERM – Spawning run inventory Fisher Creek 1999; creel survey on Candle Lake; tagged walleye being studied in Candle Lake initiated 1998 continued in 2000, to help determine fish movements and spawning areas.
Monitor all fish harvesting including angling, traditional subsistence use and other aquatic factors to indicate the health of the fishery and the aquatic ecosystem, and allow for timely management decisions.	<i>SERM, PANP</i>	Harvest Monitoring Program Candle Lake 2000 Montreal Lake 2002	SERM-Yes	SERM – Summer angler harvest (creel) survey for Candle Lake completed in 2000.

Concern 14: Conservation of Wildlife Resources

Action	Initiating Agency	Commitment Date	Commitment Date Met Y/N	Comments
Develop management options that promote the long-term viability of caribou. Strategies should be formulated in cooperation with all interested parties, land users, First Nations, and Métis.	<i>SERM, PANP, Weyerhaeuser</i>	SERM-Ongoing Formalize consultation/development of management options after the caribou board is in place 2002 PANP-Research completed 1998 Monitoring March 2001	SERM-Yes	SERM – Caribou status report completed for province in 2000
Gather/coordinate wildlife data held by the partners	<i>IRM, Partners</i>	August, 2000	IRM-No	IRM – Re-evaluate need and structure of data
Develop guidelines for harvesting and silvicultural operations to avoid disturbing rare species and ecosystems, critical habitat areas, wildlife travel routes, nesting sites, and other sensitive wildlife sites.	Weyerhaeuser, <i>SERM, EH</i>	With approval of Weyerhaeuser 20-year Forest Management Plan and implementation of Operating Guidelines - 2000	SERM-No	SERM - Weyerhaeuser 20 year plan approval in 2001 operating guidelines will follow. Weyerhaeuser - Ongoing
Research, develop and test tools to assist in the inventory of wildlife species.	<i>IRM</i>	Identify Key species September, 2000 and reassess	IRM-No	IRM - Evaluate whether this topic area will be prioritized by IRM in upcoming years.
Contribute to the genetic data bank at the University of Alberta by submitting animal tissues when available.	<i>SERM, PANP</i>	SERM-ongoing, when available / requested PANP-Began 1996 for bison	PANP-Yes SERM-Yes	PANP - As bison are being handle tissue and blood samples are being sent out. Still need to set protocol for other species. SERM - Ongoing, when available/requested.

Improve/develop inventories of critical habitat, bird communities, wildlife populations, and disease.	SERM, PANP	Ecosite Classification Initiated 1999 Elk Habitat model 2003 Bison 2001 Mule Deer 2002	SERM-Yes	SERM - Forest Ecosite Classification System in 3 rd field season. The data will form the basis for defining the forest ecosystems of Saskatchewan. There have been approximately 650 permanent sample plots established provincially. 51 of the 650 have been established in ecodistricts that are wholly or partially within the PAMF area: E18 Waskesiu Upland; E21 Montreal Lake Plain; E22 Emma Lake Upland; E21 Whiteswan Upland. SERM - Aerial Survey protocol for Moose designed 2000.
Develop a management agreement for the free roaming bison herd (include the park, provincial and private land where they may roam) in consultation with surrounding land owners and users. The agreement must address the protection and management of the bison, while considering conflicts with other users.	PANP, SERM	Initiate 2000 Draft 2001 Complete 2001-2002	PANP-Yes	PANP - Have carried out meeting with stakeholder group on the west side of the park. Initiated contact with SERM representatives.
Develop a protocol for monitoring the park's free roaming bison population and encourage a population/habitat study.	PANP	Protocol developed 1995 carried out annually Study initiated 1996	PANP-Yes	PANP - Protocol being documented. Methodology was completed in 1995 and has been carried out since.

Concern 17: Hunting and Fishing Season Dates

Action	Initiating Agency	Commitment Date	Commitment Date Met Y/N	Comments
Fish and wildlife biologists in consultation with local users need to review the hunting and fishing season dates for the PAMF area. Portions of the area receive high levels of use and may require changes to the season dates or closures of certain areas to maintain sustainable harvest levels in the area.	<i>SERM, PANP</i>	SERM-Candle Lake Fish Board Initiated 1999; MLCN/SERM partnership (elk, fisheries etc.) PANP- implemented for Lake Trout spring 1999	SERM-Yes PANP-Yes	SERM – Regulated elk hunting season closed in elk re-introduction area in 1999. PANP - Trout tagging and reporting system carried out in 1999 and 2000. Seasons changed to protect spawning lake trout.

Concern 20: Harvesting Methods (timber)

Action	Initiating Agency	Commitment Date	Commitment Date Met Y/N	Comments
Investigate, develop and test new harvesting methods to minimize the impact of forestry operations on the environment and emulate natural disturbances. Methods used should have the least impact to the ecosystem while remaining economically viable.	<i>EH, Weyerhaeuser</i>	Ongoing	EH-Yes Weyerhaeuser-Yes	Weyerhaeuser - Ongoing
Investigate, develop and test alternate harvesting methods for use on sensitive sites.	<i>EH, Weyerhaeuser</i>	Ongoing (with Riparian Area harvesting project initiated 1999, continue 2000-2001)	EH-Yes	
Evaluate methods of further increasing the efficiency in harvesting and sorting operations.	<i>Weyerhaeuser</i>	Ongoing	Weyerhaeuser-Yes	Weyerhaeuser - Ongoing

Concern 21: Need for Reforestation

Action	Initiating Agency	Commitment Date	Commitment Date Met Y/N	Comments
In the PAMF area, evaluate, develop and test silviculture techniques, site preparation equipment and techniques which will improve both natural and planted renewal in the planning area and the province.	EH, <i>Weyerhaeuser</i> , CFS	Ongoing	Weyerhaeuser-Yes	Weyerhaeuser - Ongoing
Develop a standard or standards which defines NSR.	<i>SERM</i> , Weyerhaeuser		Weyerhaeuser-Yes	Weyerhaeuser – FMA Specific Standards currently being developed for Pasquia Porcupine FMA; will be applicable to the PAMF.
Update the inventory of NSR and regenerated sites and prioritize areas for renewal if required.	<i>SERM</i> , <i>Weyerhaeuser</i>	In conjunction with new forest inventory	Weyerhaeuser-Yes	Weyerhaeuser - Ongoing
If present, reduce any accumulated backlog of not satisfactorily restocked land (NSR).	<i>SERM</i> , <i>Weyerhaeuser</i>	As Required	Weyerhaeuser-Yes	Weyerhaeuser – Area by area

Concern 22: Fire

Action	Initiating Agency	Commitment Date	Commitment Date Met Y/N	Comments
Develop a fire management plan for the Prince Albert Model Forest area. This should be done involving the PAMF partnership, forest industry, local residents, land users, Métis, and First Nations. The plan will be integrated with existing plans/mandates of the various jurisdictions, and indicate areas of high and low priority for suppression activities.	<i>IRM</i> , <i>SERM</i> , PANP, Partners	Gather information for August, 2000 (e.g. human and wildlife values, fuel type)	<i>IRM</i> -Yes	<i>IRM</i> - Evaluate information (fuel types, values map, existing fire management plans, and goals and objectives) gathered.

Investigate, develop and test tools for predicting fire, assessing impacts of different control options and predicting/identifying priorities.	<i>IRM</i>	Re-evaluate annually Beginning January, 2000	IRM-Yes	IRM - Project not developed and will not be carried forward.
--	------------	--	---------	--

Concern 23: Forest Insect and Disease Management

Action	Initiating Agency	Commitment Date	Commitment Date Met Y/N	Comments
Research, develop and test tools to assist in modeling and predicting insect and disease risks and infestations. (Due to the current outbreak, particular attention should be focused on spruce budworm)	<i>IRM</i> , CFS, SERM	Initiated March, 1999 Project currently administered by SERM	IRM-Yes	IRM – Project is currently being administered by SERM.
Assess the impact of different methods of control.	<i>EH, SERM</i> , Weyerhaeuser, CFS	Ongoing for Spruce Budworm	EH-Yes SERM-Yes	EH – This project is currently being administered by SERM.
Research, develop and test tools to assist in insect and disease control options. (Due to the current outbreak, particular attention should be focused on spruce budworm)	<i>IRM</i>		IRM-Yes	IRM - Project is currently being administered by SERM.

Concern 24: Operating Ground Rules

Action	Initiating Agency	Commitment Date	Commitment Date Met Y/N	Comments
Operating guidelines to reflect approved Twenty-year Plan including requirements for implementation of sustainable, ecosystem-based management. After the operating guidelines are initially updated, the principles of adaptive management should be applied to continuously review and modify the guidelines as necessary.	<i>Weyerhaeuser</i> , IRM	Developed, reviewed and implemented in conjunction with 20-year Forest Management Plan and EMS.	Weyerhaeuser-Yes	

Concern 25: Forestry Roads (access)

Action	Initiating Agency	Commitment Date	Commitment Date Met Y/N	Comments
Develop an access management strategy for the PAMF area, involving local users, Métis, First Nations, governments, industry, and communities.	<i>SERM, Weyerhaeuser</i>		Weyerhaeuser-Yes	Weyerhaeuser – Ongoing; very localized.

Concern 26: Forestry Roads (impacts - erosion)

Action	Initiating Agency	Commitment Date	Commitment Date Met Y/N	Comments
Develop and test a suitable and effective vegetation mix consisting of native and non-invasive plant species for erosion control.	<i>SERM, Weyerhaeuser, EH</i>	Developed, reviewed and implemented in conjunction with the 20-year Forest Management Plan	SERM-Yes	SERM- In cooperation with University of Saskatchewan investigating suitable vegetation mix 2000.

Concern 28: Forestry Roads (culvert sizing; fish bearing streams)

Action	Initiating Agency	Commitment Date	Commitment Date Met Y/N	Comments
Test the usage of the fish species richness predictive model (and others) to identify streams likely to support game or commercial fish species, and install culverts designed to accommodate fish passage.	Weyerhaeuser, <i>IRM, SERM</i>	Developed and initially tested by Weyerhaeuser	IRM-Yes Weyerhaeuser-Yes	IRM – Completed Weyerhaeuser – In testing

Concern 32: Forestry Roads (closures)

Action	Initiating Agency	Commitment Date	Commitment Date Met Y/N	Comments
Identify roads that access, or allow access, to sensitive wildlife habitat.	<i>SERM, Weyerhaeuser</i>	Ongoing	SERM-Yes Weyerhaeuser-Yes	SERM - Done in conjunction with 5 year operating plans. Weyerhaeuser - Ongoing
Annually identify and reclaim roads that are no longer needed for forestry operations.	<i>Weyerhaeuser, SERM, PANP</i>	Done in conjunction with 5 year operating plans - 2000	Weyerhaeuser-Yes	Weyerhaeuser - Ongoing
Re-evaluate all old roads and their closure status during five year planning. Reuse old roads whenever possible to minimize access created.	<i>Weyerhaeuser, SERM, PANP</i>	Done in conjunction with 5 year operating plans - 2000	Weyerhaeuser-Yes	Weyerhaeuser - Ongoing

Concern 36: Fire Salvage

Action	Initiating Agency	Commitment Date	Commitment Date Met Y/N	Comments
Complete the development and implementation of a new, ecologically based fire salvage policy that identifies how green timber, within burns, will be identified and when green and burned timber should not be harvested.	<i>SERM</i>		SERM-Yes	SERM – Discussions initiated.

Concern 37: Forest Inventory

Action	Initiating Agency	Commitment Date	Commitment Date Met Y/N	Comments
Develop a more detailed ecosystem based forest vegetation inventory, which can provide better information to assure sustainable levels are being allocated and harvested.	<i>SERM, Weyerhaeuser, PAMF, PANP, LLIB, MLCN</i>	SERM- Saskatchewan Vegetation Inventory System Initiated 1999 several years to further develop Weyerhaeuser-A new forest inventory initiated in 1999 Model forest area after 2003	SERM-Yes Weyerhaeuser-Yes	PANP – Is not able to commit to the development of a new vegetation inventory at this time. SERM - Work continued on the Saskatchewan Forest Vegetation Inventory System. A draft is expected in 2001-2002. Weyerhaeuser - A new forest inventory initiated in 1999.
Assist in and test the Provincial forest ecosite classification system so that it can be implemented throughout the forested regions of Saskatchewan.	<i>IRM, PAMF</i>	PAMF involved in testing for the mid boreal ecosite 1996	IRM-Yes	IRM – Completed SERM – The Forest Ecosystem Classification Program is entering its third field season of data collection. The data will form the basis for defining the forest ecosystems of Saskatchewan. To date (03/2001), approximately 650 permanent plots have been established. Of this total, 51 plots have been established in the E18, E21, E22 and E23 ecodistricts, which are shared by the Prince Albert Model Forest area.
Develop an inventory of human land uses and developments in the forest.	<i>IRM</i>	Initiated 1998 Update December, 2000	IRM-Yes	IRM - Completed for land use planning process requirements. IRM is developing a 'values' map and a sharable database
Investigate, develop and test models and tools for predicting growth, biological future states, and cost-effective ecosite mapping.	<i>IRM</i>	Ongoing, investigation initiated 1998	IRM-Yes	IRM - Working with other agencies to build database(s) – fragmentation, ecological predictive modelling and cumulative effects.

4.3 Integrated Resource Management

Concern 3: Aesthetic Buffers (around resort lakes and recreational rivers)

Action	Initiating Agency	Commitment Date	Commitment Date Met Y/N	Comments
Identify recreation areas that may require aesthetically sensitive management.	Weyerhaeuser, SERM	Initiate 2000	SERM-Yes Weyerhaeuser-Yes	SERM - Initial site inspection completed 2000. Weyerhaeuser – Internal; no comprehensive list.

Concern 4: Buffer Zones (Roads)

Action	Initiating Agency	Commitment Date	Commitment Date Met Y/N	Comments
Investigate, develop and test modified harvesting practices and ways of incorporating forest landscape design principles to manage aesthetics along roadways.	Weyerhaeuser , IRM, SERM	With approval of Weyerhaeuser 20-year Forest Management Plan and implementation of Operating Guidelines-2000	Weyerhaeuser-Yes	Weyerhaeuser – Ongoing; monitoring to continue
Identify roads needing/not needing special management because of aesthetic values	SERM , Weyerhaeuser	Initiate 2000	SERM-No Weyerhaeuser-Yes	SERM - Not Initiated Weyerhaeuser – Internal; no comprehensive list

Concern 5: Buffer Zones (cabins)

Action	Initiating Agency	Commitment Date	Commitment Date Met Y/N	Comments
Develop a consultation process which allows cabin owners the opportunity for consultation prior to harvesting activities.	<i>Weyerhaeuser, SERM</i>	Local Stakeholder Advisory Committee (LSAC) Process initiated 1995	Weyerhaeuser-Yes	

Concern 6: Traditional Resource Use Cabins

Action	Initiating Agency	Commitment Date	Commitment Date Met Y/N	Comments
Initiate a process where agencies responsible for land management, First Nations and all impacted users, develop a management plan. The plan should outline the “rules” for First Nations cabins built incidental to the Treaty right. The PAMF Association Inc. may facilitate the discussions between SERM and First Nations in the Prince Albert Model Forest Area.	<i>SERM, MLCN, LLIB, PAGC, FSIN</i>	Initiate Discussions 2000	SERM-Yes	SERM - Discussions initiated

Concern 12: Sand and Gravel Quarries

Action	Initiating Agency	Commitment Date	Commitment Date Met Y/N	Comments
Develop new guidelines, for the allocation and development of sand and gravel resources (with involvement of the resource users, First Nations and land management agencies, and other government departments).	<i>SERM</i>		SERM-Yes	SERM - Initiated discussions on a new Sand and Gravel Policy

Concern 15: Need for Effective Enforcement Programs

Action	Initiating Agency	Commitment Date	Commitment Date Met Y/N	Comments
Review the resources provided for law enforcement. The review must consider officer safety, agency mandate, and available resources. The review should also identify areas where resources are needed, and be made available to the public.	<i>PANP, SERM</i>	SERM-Ongoing PANP-Law Enforcement Plan completed 1998 reviewed annually	PANP-Yes SERM-Yes	PANP - Draft plan completed. Going to Ottawa for approval. SERM - new technologies, strategies and resource needs are reviewed on an ongoing basis.
Develop educational programs which emphasize self regulation.	<i>SERM, PANP, CAKE</i>	SERM-Initiate 2000	SERM-Yes	SERM - Educational material provided on the impacts to resources from use (e.g. Anglers Guide, pamphlets, Bear Awareness). SERM/MLCN – Agreement between SERM and MLCN that band members will not hunt the elk relocated to the Montreal Lake area.
Investigate methods and technology, that increase the effectiveness of environmental/resource conservation enforcement.	<i>SERM, PANP</i>	Ongoing	PANP-Yes SERM-Yes	PANP - The park examines new technologies and strategies on an ongoing basis. SERM-New technologies and methods that increase the effectiveness are investigated on an ongoing basis.

Concern 19: Trapping

Action	Initiating Agency	Commitment Date	Commitment Date Met Y/N	Comments
Develop an inventory of human land uses and developments.	<i>IRM, SERM, PANP</i>	Initiated 1998 Update December, 2000	IRM-Yes	IRM – Completed for land use planning process requirements. IRM is developing a ‘values’ map and a sharable database

Concern 20: Need to Plan and Manage so that Recreational Activities and Industrial Activities are not in Conflict

Action	Initiating Agency	Commitment Date	Commitment Date Met Y/N	Comments
Develop an inventory of all human land uses and developments.	SERM, PANP, <i>IRM</i>	Initiated 1998 Update December, 2000	IRM-Yes	IRM – Completed for land use planning process requirements. IRM is developing a ‘values’ map and a sharable database

Concern 24: Forestry Practices should Implement the Principles of Sustainable and Integrated Resource Management

Action	Initiating Agency	Commitment Date	Commitment Date Met Y/N	Comments
Provide training to staff and harvesting contractors, in the region, on sustainable/ecosystem based management and the operating guidelines in the area.	<i>Weyerhaeuser</i>	Ongoing Revised 2000 with new Environmental Management System	Weyerhaeuser-Yes	Weyerhaeuser - Ongoing
Monitor forestry operations and other resource uses to ensure that they are sustainable.	<i>SERM, LLI</i>	Ongoing Ecosystem Monitoring Task Force initiated 1999-2000	SERM-Yes	SERM - A process is in place to monitor forest industries and ensure compliance with management plans, legislation and regulation. SERM - Developed a draft monitoring framework with the science advisory board. Draft will be taken out for review.
PAMF will provide information on the sustainable use of forest lands located outside of the model forest area.	SERM, EH, <i>CAKE</i> , CIF, <i>PAMF</i> , Weyerhaeuser	Ongoing	CAKE-Yes PAMF-Yes Weyerhaeuser-Yes	Weyerhaeuser - Ongoing

Concern 25: Protection/Respect of Traditional Use Areas

Action	Initiating Agency	Commitment Date	Commitment Date Met Y/N	Comments
Provide training and development in cultural and heritage resource protection to all appropriate staff.	<i>Partners</i>	Weyerhaeuser-Implemented 1999	SERM-Yes Weyerhaeuser-Yes	SERM - Aboriginal Cultural Awareness Program initiated 2000. Weyerhaeuser - Ongoing
Develop an inventory of traditional uses and culturally significant sites. The inventory should be compatible with those used by the partner organizations and other organizations outside the partnership.	CAKE, <i>IRM</i> , SERM, Weyerhaeuser, PANP, MLCN, PAGC, LLIB	SERM-Existing inventory (annually acquire updated information) PANP-Culturally significant sites completed March 2000 Traditional Uses 2002		IRM - This project will be lead by the First Nations partners of the Prince Albert Model Forest. IRM will assist where necessary.
Research, develop and test models which predict culturally significant and traditional use areas.	<i>IRM</i>	Completed in Phase 1 initiated at PAMF used by Weyerhaeuser	IRM-Yes	IRM-Completed

4.4 Local Level Indicators

Concern 1: Criteria and Indicators

Action	Initiating Agency	Commitment Date	Commitment Date Met Y/N	Comments
To ensure sustainable use, develop a monitoring program using indicators to monitor the effects of all land and resource uses, including forestry operations, on the ecosystem health in the PAMF area and surrounding region.	<i>LLI</i>	Develop list of indicators of sustainable forest management 1999-2000 Sample for baselines 2000-2001	LLI-Yes	LLI - The EH/LLI Working Group has developed an initial list of C&I and have assigned them to one or more of the partners. Due to other commitments, baseline information will be forthcoming Now that the PAMFA has an IRM plan, a monitoring program can be established with respect to this. This will happen in the next fiscal.
Work with and develop cooperative working relationships with other organizations, individuals and groups to enhance the monitoring of the PAMF area (i.e. volunteer monitoring).	<i>LLI</i> , PAMF, Partners		SERM-Yes	SERM/MLCN - Elk and Woodland Caribou sighting program initiated 2000

4.5 Values and Benefits

Concern 2: Training and Education Opportunities for Aboriginal people in Resource Management

Action	Initiating Agency	Commitment Date	Commitment Date Met Y/N	Comments
In cooperation with First Nations and Métis, investigate present and future professional and technical job needs within the forest industry.	<i>CAKE</i> , Partners	Weyerhaeuser-ongoing		
Assist in providing, technical and management training programs.	<i>CAKE</i> , Partners	Weyerhaeuser-ongoing	CIF-Yes	CIF – Co-sponsored 8 professional development opportunities since May 1999.

Concern 4: Tourism/Eco-tourism

Action	Initiating Agency	Commitment Date	Commitment Date Met Y/N	Comments
Develop, with input from the partners, tourism operators, industry and other interested groups, guidelines to maintain the attractiveness of landscapes used for recreation.	<i>SERM</i>	Initiate 2000 Identify areas which are special or have a high potential for tourism	SERM-Yes	SERM - Initial site inspections 2000. SERM - Scenic and recreational procedures will be developed as part of the Weyerhaeuser 20 year plan and operating guidelines.

Concern 5: Other Forest Products (e.g. berries, moss, wild rice, mushrooms, and medicines)

Action	Initiating Agency	Commitment Date	Commitment Date Met Y/N	Comments
Develop a permitting system for the PAMF area so that current harvest levels of other forest products is known.	<i>SERM</i>	Implemented 1999 with new <i>Forestry Act</i> and <i>Regulations</i>	SERM-Yes	SERM - Commercial operators are licensed and Forest Products Permits are required to harvest.

4.6 Implementation Strategies

Action	Initiating Agency	Commitment Date	Commitment Date Met Y/N	Comments
Assign a person, or group of people, to over-see the implementation and monitoring of the plan.	<i>IRM</i> , Partners	2000	IRM-Yes	IRM - Prince Albert Model Forest staff person recruited for plan implementation and coordination.
Investigate, develop and test conflict resolution methods.	<i>IRM</i>	March 31 st , 2000 Gather conflict resolution information and prepare a list of external service providers	IRM-Yes	IRM - Reference material housed in Prince Albert Model Forest library.

The partners of the Prince Albert Model Forest are committed to sustainable forest management (SFM). The Plan is a system, which demonstrates the practical application of the concepts of SFM. Resolution of the action items outlined in the plan will support sustainable forest management activities in the Prince Albert Model Forest area.

The Annual Review provides information on the implementation progress of the Prince Albert Model Forest Ecosystem Based Integrated Resource Management Plan for January 1, 2000 to December 31, 2000. It shows the public and the Prince Albert Model Forest partners what commitments have been met and not met in the implementation of the plan. Also, it serves as an annual review or status report of the plan implementation progress. A review of the Prince Albert Model Forest Ecosystem Based Integrated Resource Management Plan will be conducted annually in which information on the implementation process will be collected. This information will then be used as input into the 5-year major evaluation of the Prince Albert Model Forest Ecosystem Based Integrated Resource Management Plan. This Annual Review will be presented to the public for review and recommendations.

For more information on the Prince Albert Model Forest Ecosystem Based Integrated Resource Management Plan and/or the Annual Review, contact the Prince Albert Model Forest office:

P.O. Box 2406 Prince Albert, SK S6V 7G3 or visit the office at #103 – 1004 – 1st Avenue West, Prince Albert, SK
Phone: (306) 922-1944 Fax: (306) 763-6456 E-mail: pamf@pamodelforest.sk.ca

KEY TO ABBREVIATIONS

Abbreviation	Meaning
CAKE	Communications & Knowledge Exchange working group of the Prince Albert Model Forest
CFS	Canadian Forest Service
CIF	Canadian Institute of Forestry
EH	Ecosystem Health working group of the Prince Albert Model Forest
FSIN	Federation of Saskatchewan Nations
FV & B	Forest Values & Benefits working group of the Prince Albert Model Forest
IRM	Integrated Resource Management working group of the Prince Albert Model Forest
LLI	Local Level Indicators working group of the Prince Albert Model Forest
LLIB	Lac La Ronge Indian Band
MLCN	Montreal Lake Cree Nation
PAGC	Prince Albert Grand Council
PAMF	Prince Albert Model Forest
PANP	Prince Albert National Park (Parks Canada)
Partners	The ten partners of the Prince Albert Model Forest
SaskWater	Saskatchewan Water Corporation
SEM	Saskatchewan Energy & Mines
SERM	Saskatchewan Environment & Resource Management
Weyerhaeuser	Weyerhaeuser, Saskatchewan Timberlands (Prince Albert)

LITERATURE CITED

Prince Albert Model Forest Association Inc. 1997. Phase II: 1997-2002. Prince Albert Model Forest Association Inc. Report.

Prince Albert Model Forest Association Inc. 2000. Prince Albert Model Forest Ecosystem Based Integrated Resource Management Plan.



Prince Albert Model Forest
P.O. Box 2406
Prince Albert, Saskatchewan S6V 7G3
#103 – 1004 – 1st Avenue West
Phone: (306) 922-1944
Fax: (306) 763-6456
Email: pamf@pamodelforest.sk.ca
Website: www.pamodelforest.sk.ca