

**Prince Albert Model Forest  
Ecosystem Based Integrated Resource Management  
Plan Review**

## Table of Contents

Table of Contents.....	i
List of Figures.....	v
List of Tables.....	vi
Overview.....	1
Purpose and Use of the Document.....	1
Introduction.....	2
Prince Albert Model Forest Mission.....	3
Goals of the Prince Albert Model Forest.....	3
Partners of the Prince Albert Model Forest.....	3
History of the Prince Albert Model Forest Ecosystem Based Integrated Resource Management Plan.....	4
Plan Goal.....	5
Plan Objectives.....	5
Coordination of Plan Implementation.....	6
Summary of Plan Review.....	7
The Status of the IRM Plan Actions Up to 2006.....	10
4.1 Communications and Knowledge Exchange.....	11
Concern 1: Shared Information on Resource Management.....	11
Concern 2: Public Input and Involvement (structure options).....	12
Concern 3: Inclusion of other Interest Groups.....	12
Concern 4: Continued/Increased Public Input.....	12
4.2 Ecosystem Health.....	14
Concern 1: Sustainability of the Prince Albert Model Forest area as an Ecosystem .....	14
Concern 2: Protection of Rare and/or Endangered Plant and Wildlife Species... ..	14
Concern 3: Health of Riparian Areas.....	15
Concern 4: Resource Use and Development in Sensitive Areas.....	15
Concern 5: Research.....	16
Concern 6: Protection of the Water Resource.....	17
Concern 7: Protect Ecological Integrity.....	18
Concern 8: Biodiversity.....	18
Concern 9: Impacts on the Natural Environment.....	18
Concern 10: Non-Native Species/Exotics.....	19
Concern 11: Forest Fragmentation due to Forestry.....	19
Concern 12: Water Control Structures.....	20
Concern 13: Conservation of Fish Resources.....	20
Concern 14: Conservation of Wildlife Resources.....	21
Concern 15: Pollution.....	22
Concern 16: Mineral Exploration and Mining (oil and gas, metallic and industrial minerals).....	23
Concern 17: Hunting and Fishing Season Dates.....	23
Concern 18: Timber Harvest Planning and Distribution.....	23
Concern 19: Timber Harvesting Duration.....	23
Concern 20: Harvesting Methods (timber).....	23

Concern 21: Need for Reforestation.....	24
Concern 22: Fire.....	24
Concern 23: Forest Insect and Disease Management.....	25
Concern 24: Operating Ground Rules.....	25
Concern 25: Forestry Roads (access).....	25
Concern 26: Forestry Roads (impacts-erosion).....	26
Concern 27: Forestry Roads (stream crossings).....	26
Concern 28: Forestry Roads (culvert sizing; fish bearing streams).....	26
Concern 29: Forestry Roads (culvert sizing; non-fish bearing streams).....	26
Concern 30: Forestry Roads (removal of stream crossing structures).....	26
Concern 31: Forestry Roads (location).....	26
Concern 32: Forestry Roads (closures).....	27
Concern 33: Grazing.....	27
Concern 34: Shoreline Management (docks, boat houses).....	27
Concern 35: Service Corridors (e.g. power lines).....	27
Concern 36: Fire Salvage.....	27
Concern 37: Forest Inventory.....	28
4.3 Integrated Resource Management.....	29
Concern 1: Game and Corridor Preserves.....	29
Concern 2: Candle Lake Game Preserve.....	29
Concern 3: Aesthetic Buffers (around resort lakes and recreational rivers).....	29
Concern 4: Buffer Zones (roads).....	29
Concern 5: Buffer Zones (cabins).....	29
Concern 6: Traditional Resource Use Cabins.....	30
Concern 7: Recreational Cottages.....	30
Concern 8: Temporary Hunting Shelters.....	30
Concern 9: Development.....	30
Concern 10: Development Along the Major Highway Corridors (e.g. Highway 2)	30
.....	30
Concern 11: Lakeshore Development.....	30
Concern 12: Sand and Gravel Quarries.....	31
Concern 13: Trails/Locations (hiking, ATV's (including snowmobiles), cross	
country skiing).....	31
Concern 14: Trespass.....	31
Concern 15: Need for Effective Enforcement Programs.....	31
Concern 16: Development of Statements of Biological Future States.....	32
Concern 17: Forced Change From Traditional to Modern Lifestyles	
(opportunities for maintaining traditions).....	32
Concern 18: Bull Moose Operation Planning Area.....	32
Concern 19: Trapping.....	33
Concern 20: Need to Plan and Manage so that Recreational Activities and	
Industrial Activities are not in Conflict.....	33
Concern 21: Transportation of Timber.....	33
Concern 22: Planning.....	33
Concern 23: Decision-Making/Shared Jurisdiction.....	33

Concern 24: Forestry Practices Should Implement the Principles of Sustainable and Integrated Resource Management .....	33
Concern 25: Protection/Respect of Traditional Use Areas.....	34
4.4 Local Level Indicators.....	35
Concern 1: Criteria and Indicators .....	35
Concern 2: Dealing with Change (adaptive management).....	35
4.5 Values and Benefits.....	36
Concern 1: Concerns and Recommendations .....	36
Concern 2: Training and Education Opportunities for Aboriginal People in Resource Management .....	36
Concern 3: Sustainable Economic and Social Benefits.....	37
Concern 4: Tourism/Eco-tourism.....	37
Concern 5: Other Forest Products (e.g. berries, moss, wild rice, mushrooms, and medicines).....	38
4.6 Implementation Strategies .....	39
Contact List .....	40
Key to Abbreviations.....	41
Literature Cited.....	42

## List of Figures

Figure 1: Prince Albert Model Forest Area.....	2
Figure 2: Overall Status of Actions .....	7
Figure 3: Number of Actions/Initiating Agency .....	8
Figure 4: Action Status According to Agency .....	9

**List of Tables**

Table 1: Status of Actions..... 7

## **Overview**

The Prince Albert Model Forest manages its resources within the Prince Albert Model Forest area by following the direction of their Ecosystem Based Integrated Resource Management Plan developed in 1997. The progress of the plan is monitored to check that the guidelines are being implemented and followed.

The Ecosystem Based Integrated Resource Management plan is an adaptive document. This allows the Prince Albert Model Forest to make changes when necessary in order to make the best decisions and take the best actions based on new and updated information. Within the plan there are actions that refer to the monitoring of the plan. It requires that a comprehensive report evaluating the status of the Prince Albert Model Forest Ecosystem Based Integrated Resource Management plan and area be done every 5 years.

## **Purpose and Use of the Document**

This document will serve as the required comprehensive report evaluating the Prince Albert Model Forest Ecosystem Based Integrated Resource Management plan and area for the five-year period beginning at January 2001 through to December 2006. Each actions status will be summarized by the indicated contacts for each initiating agency. This information will then be presented to the Prince Albert Model Forest Association and its partners for their use. It will also be made available to the general public.

## Introduction

The Prince Albert Model forest is one of 11 not-for-profit organizations within the Canadian Model Forest Network. It is made up of a partnership consisting of 14 organizations within and around the Prince Albert Model Forest area. These members are from industry, local communities, First Nations, and both levels of government. The Prince Albert Model Forest is supported financially by direct funding from the Canadian Forest Service and contributions (in-kind and direct) from its partners in order to manage its forested area in a sustainable manner.

Being located approximately 70km north of Prince Albert, the Prince Albert Model Forest area is found within the mid-boreal upland ecoregion and covers approximately 367 000 hectares. This area extends west into the Prince Albert National Park through to Montreal Lake and La Ronge, and east to Candle Lake. This area also encompasses some of the Provincial Crown land base and Weyerhaeuser's FMA area.

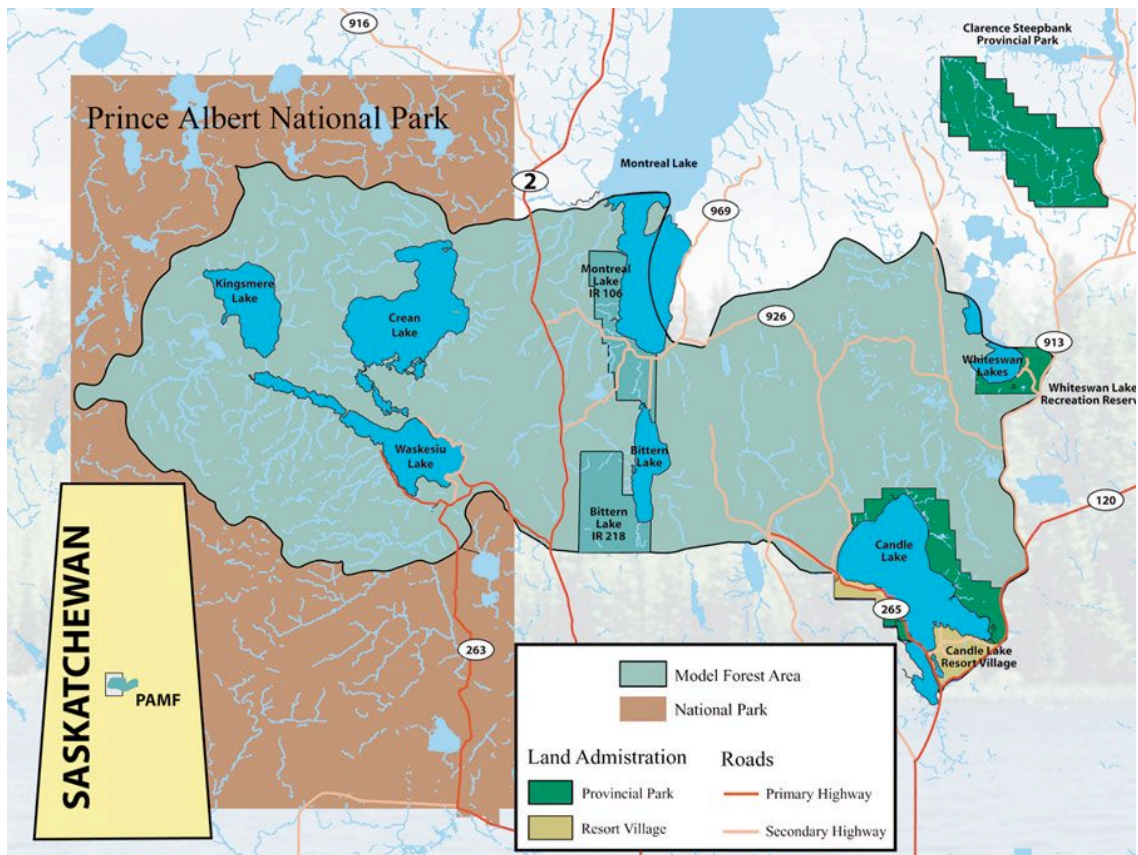


Figure 1: Prince Albert Model Forest Area

The Prince Albert Model Forest area is maintained for the benefit of all Saskatchewan residents and is abundant in many resources. These resources do not only include timber for industry but also provisions for food and shelter, protected wilderness areas, and a place for pursuing activities such as hunting, fishing, camping and hiking.

## **Prince Albert Model Forest Mission**

*To work towards Sustainable forest Management through the development and testing of new forest management tools, sharing of our successes, developing linkages, and expanding the PAMF partnership.*

## **Goals of the Prince Albert Model Forest**

The Prince Albert Model Forests goals (1997) reflect the state and knowledge base of forest management:

- To ensure a sustainable and predictable supply of forest based ecological, social and economic benefits through the management of forest ecosystems.
- Raise awareness and demonstrate commitment to the concepts of sustainability, integrated resource management and ecosystem management among forest users, researchers, and managers at the local, regional, national, and international level.

## **Partners of the Prince Albert Model Forest**

The Prince Albert Model Forest is comprised of a partnership with fourteen members. These partners work together to ensure sustainable development of the Prince Albert Model Forest area. This partnership consists of:

- Canadian Forest Service
- Canadian Institute of Forestry
- Federation of Saskatchewan Indian Nations
- First Nations Island Forest Management Inc.
- Lac La Ronge Indian Band
- Montreal Lake Cree Nation
- Prince Albert Grand Council
- Prince Albert National Park
- Resort Village of Candle Lake
- Saskatchewan Environment
- Saskatchewan Forest Centre
- Saskatchewan Forestry Association
- Saskatchewan Research Council
- Weyerhaeuser

## **History of the Prince Albert Model Forest Ecosystem Based Integrated Resource Management Plan**

The Ecosystem Based Integrated Resource Management Plan has been in place since 1997. A need for direction in management of the Prince Albert Model forest area was realized during Phase II. As a result the Integrated Resource Management working group was developed and came up with a framework for the plan. In 1998 the IRM working group held public meetings in communities within or near the PAMF area informing them of the plan. From these meetings they obtained useful comments on the first draft of the plan and developed a document called *What We Thought We Heard* that was then circulated to those involved.

In 1999 they went through the same process and printed another document titled *What We Thought We Heard 2* based on the comments from 100 outside organizations involved in the planning process. These comments were used in the making of the final draft of the plan.

The Board of Directors approved the final draft in 2000 after it was circulated along with *What We Thought We Heard 2* to those in attendance at the meetings. It was made official in Saskatoon, Saskatchewan at the First Nation Forestry Program conference on January 23, 2001 by the signing of the 10 partners which included the Canadian Forest Service, Saskatchewan Environment, Weyerhaeuser, Prince Albert National Park, Montreal Lake Cree Nation, Lac La Ronge Indian Band, Prince Albert Grand Council, Federation of Saskatchewan Indian Nations, Canadian Institute of Forestry, and the Saskatchewan Forestry Association (Prince Albert Model Forest, 2001).

An annual review of the plan was conducted up until January 2001. Since then the original working groups including the IRM working group, have been dissolved. They were not replaced by similar groups but new working groups were established that carry out new projects of the Prince Albert Model Forest. These groups include Science and Technologies, Communications and Outreach, Beyond Our Boundaries, and Operations and Strategic Plans. Also since the signing of the plan, four new partners have joined the Prince Albert Model Forest. These include the Saskatchewan Research Council, First Nations Island Forest Management Inc., the Saskatchewan Forest Centre, and the Resort Village of Candle Lake. The actions originally laid out in the plan are still generally used as guidelines and some are still being worked on by the partners and the Prince Albert Model Forest.

## **Plan Goal**

The plan goal as stated by the Prince Albert Model Forest (2000) is, “To manage all uses and resources of the Prince Albert Model Forest area on an integrated and ecosystem bases, to ensure ecological economic and cultural benefits for present and future generations.”

## **Plan Objectives**

The plan objectives as stated by the Prince Albert Model Forest (2000) are:

- Apply the principles of Integrated and Ecosystem Based Management to land use and resource management activities in the Prince Albert Model Forest area
- To provide a framework that integrates other plans covering the Prince Albert Model Forest area
- Develop clear land use guidelines that allow for controlled, orderly use and development
- Identify additional areas where planning, integration, study or research are needed
- Provide guidelines for public input into land and resource management decisions
- Provide mechanisms to minimize and resolve conflict among all users
- Establish procedures to monitor the implementation and effectiveness of the plan, and provide a process to ensure the plan is reviewed and revised on a regular basis, or when new circumstances or information are available
- Encourage sustainable use and benefits from all resources in the planning area

## **Coordination of Plan Implementation**

The Integrated Resource Management working group of the Prince Albert Model Forest initially oversaw and monitored the plan. However, the five original working groups (EH, FV, IRM, CAKE, LLI) were dissolved at the end of Phase II in 2002. The Prince Albert Model Forest as a whole now monitors these actions.

The representatives for each of the partner organizations that are responsible for the actions laid out in the plan are:

Cliff Buettner – Prince Albert Grand Council  
Ron Burns – First Nations Forest Island Management Incorporated  
Patrick Derocher – Federation of Saskatchewan Indian Nations  
John Doucette – Weyerhaeuser  
Chris Dunn – Saskatchewan Environment  
Cliff Jessup – Montreal Lake Cree Nation  
Mark Johnston – Saskatchewan Research Council  
Tom J. McKenzie – Lac La Ronge Indian Band  
Clint Mauthe – Resort Village of Candle Lake  
Mike Newman – Canadian Forest Service  
Todd Olexson – Saskatchewan Environment  
Darryl Sande – Canadian Institute of Forestry  
Norm Stolle – Prince Albert National Park

## Summary of Plan Review

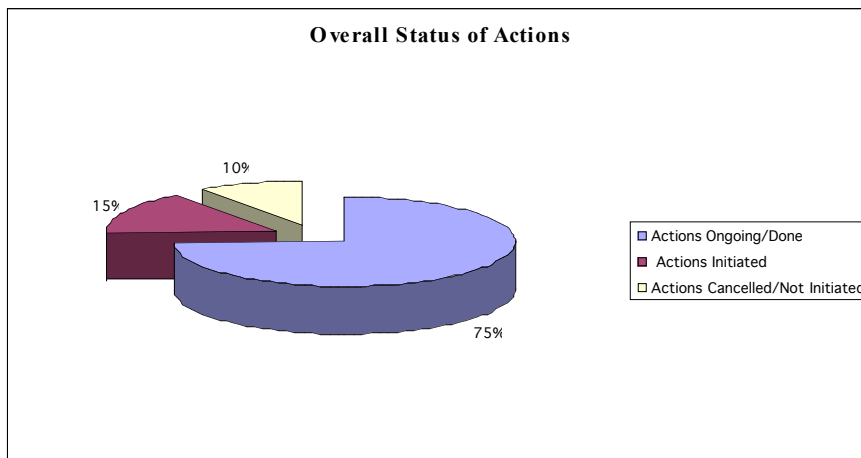
Within this section the actions reviewed in the Prince Albert Model Forest Ecosystem Based Integrated Resource Management Plan are summarized and displayed through the use of graphs and tables to show their status and statistics on all of them.

There were 132 actions identified within the 73 concerns listed. Out of those 132 actions there were 322 commitments made by the various agencies as shown in Table 1.

**Table 1: Status of Actions**

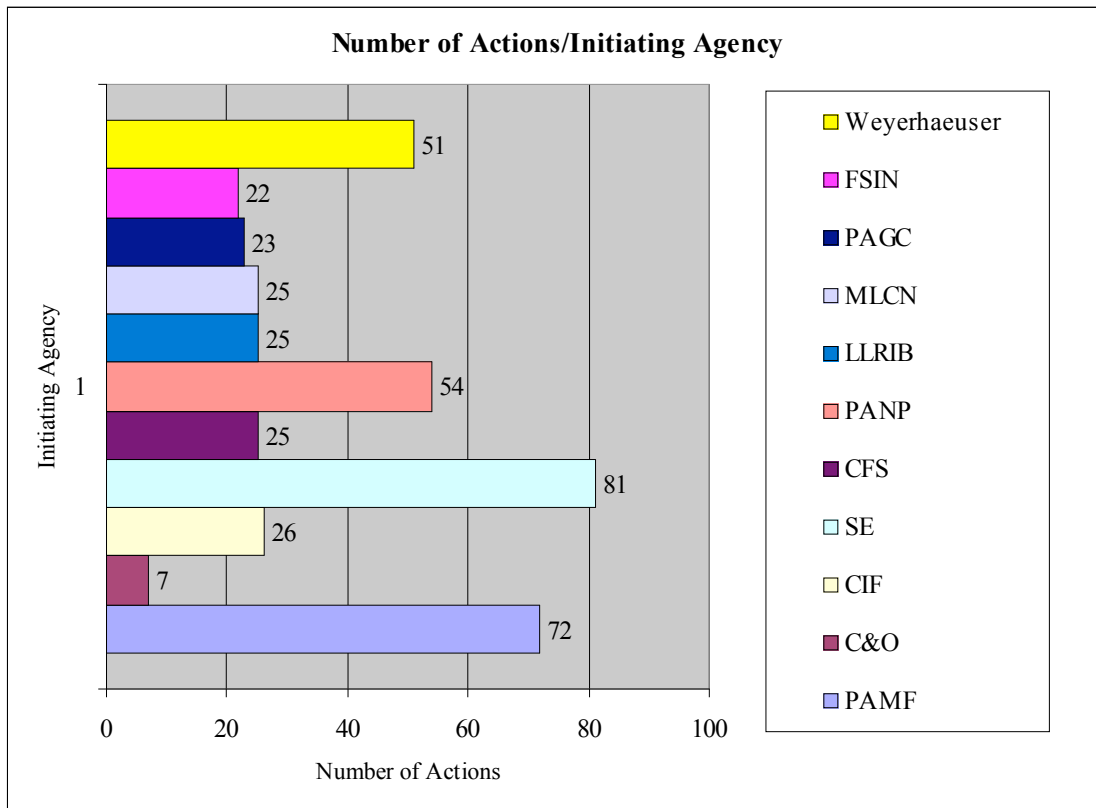
Initiating Agency	Number of Commitments	Actions Ongoing/Done	Actions Initiated	Actions Not Initiated
Prince Albert Model Forest	72	54	9	9
Communications and Outreach	7	5	2	0
Canadian Institute of Forestry	26	20	4	2
Saskatchewan Environment	81	60	9	12
Canadian Forest Service	25	18	5	2
Prince Albert National Park	54	39	10	5
Lac La Ronge Indian Band	25	17	5	3
Montreal Lake Cree Nation	25	17	6	2
Prince Albert Grand Council	23	17	4	2
Federation of Saskatchewan Indian Nations	22	16	4	2
Weyerhaeuser	51	44	5	2
Total	411	307	63	41

The overall status of the actions is displayed in a pie graph as shown in Figure 2. The majority of actions are on-going or done.



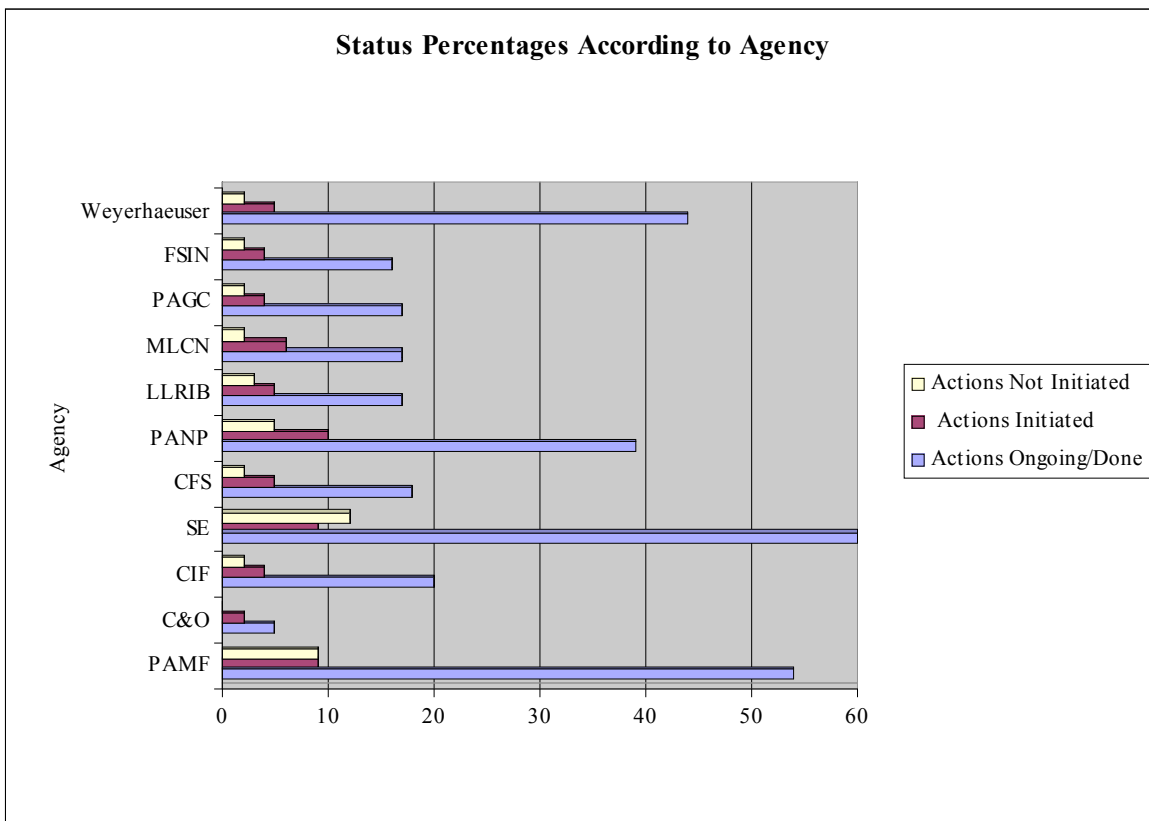
**Figure 2: Overall Status of Actions**

Figure 3 displays the amount of actions committed to by each agency. Besides the Prince Albert Model Forest; Saskatchewan Environment, Weyerhaeuser, and Prince Albert National Park have the largest amount of commitments to actions.



**Figure 3: Number of Actions/Initiating Agency**

Figure 4 looks at the status of each of the agencies actions. It is evident that Montreal Lake Cree Nation and the Canadian Forest Service have the highest amount of cancelled or yet to be initiated actions. Also notable is that Saskatchewan Environment has the largest amount of on-going or done actions.



**Figure 4: Action Status According to Agency**

## **The Status of the IRM Plan Actions Up to 2006**

This section contains the concerns and the actions listed under them that were laid out in the Prince Albert Model Forest Ecosystem Based Integrated Resource Management Plan. They appear in the order that they were in the plan.

The actions that appear are projects or items that were established by the Prince Albert Model Forest and its partners that were determined relevant and important to the management of the Prince Albert Model Forest area. Each action has an initiating agency that is responsible for working on the action. The initiating agency may be one or more of the partners or a group that was established to work on the actions.

The column for 'Comments/Current Status' provides detailed information about the action and its status from the agencies responsible. The Contact column gives the names and phone numbers of the people who are most responsible and knowledgeable about the action.

## 4.1 Communications and Knowledge Exchange

### Concern 1: Shared Information on Resource Management

Action	Initiating Agency	Action Status	Comments/Current Status	Contact
Develop a communications and knowledge exchange strategy for the model forest (including the individual partners) to help ensure that information is shared with the partnership, other land users and interested organizations and individuals. (How is the PAMF and its partners to communicate and exchange knowledge? What knowledge do we exchange, and how do we find out?)	C&O	Ongoing	The focus of the Communications and Outreach (C&O) Committee (formerly CAKE) is to share information through a variety of means to audiences who would most benefit. This is done by maintaining a current PAMF website and contributing to the CMFN website where all of the PAMF research, reports and publications are accessible on-line. News stories are published in several Saskatchewan newspapers on a weekly basis especially the Saskatoon Star Phoenix and the Prince Albert Daily Herald. The CIF's national publication the Forestry Chronicle features regular articles. Twice a year the PAMF also publishes its own newsletter the Forest Times that is disseminated through the partners to their contacts. PAMF also hosts and sponsors conferences, seminars and workshops on topics such as Aboriginal Forestry opportunities, climate change, and FireSmart, which support knowledge exchange among local communities.	Susan Carr
Provide descriptions of what information is available/used by the Prince Albert Model Forest	PAMF, CIF	On-going	PAMF website ( <a href="http://www.pamodelforest.sk.ca">www.pamodelforest.sk.ca</a> ), CMFN website ( <a href="http://www.modelforest.net">www.modelforest.net</a> ), Saskatchewan newspapers, Forestry Chronicle, Forest Times, conferences, seminars, workshops all provide information that is available or used by the PAMF. CIF co-sponsors with the Prince Albert Model Forest.	Susan Carr Darryl Sande
Provide GIS familiarization to the Prince Albert Model Forest partners and others to enable sharing of spatial databases.	PAMF, C&O	Revised Action for 2006/07 Initiated	Spatial databases this year will be archived and made available on-line through GeoSpatial Consulting and the Saskatchewan Forest Centre by populating the Virtual Data Warehouse. The public learns that the data is available on the Model Forest website where the research reports and publications are accessible.	Susan Carr Todd Olexson
Develop data storage and management protocols so that information may be shared more easily between the partners.	PAMF, Partners	Revised Action for 2006/07 Initiated	Through the Virtual Data Warehouse, data will be stored and managed to facilitate access among partners. Various levels of security apply to data depending on the wishes of the contributor of the data and its degree of sensitivity. The PAMF partners work together as needed.	Susan Carr Todd Olexson

**Concern 2: Public Input and Involvement (structure options)**

Action	Initiating Agency	Action Status	Comments/Current Status	Contact
Build a public involvement standard operating procedure for the PAMF, and the people/groups with an interest in the area.	C&O, Partners	On-going by each of the partners	Each of the partners has their own standard operating procedures to ensure public involvement and consultation is fulfilled.	Gene Kimbley

**Concern 3: Inclusion of other Interest Groups**

Action	Initiating Agency	Action Status	Comments/Current Status	Contact
Design an inclusive public consultation process that may be applicable for all resource management decisions in the PAMF area, building upon existing programs in use by the PAMF partnership.	C&O	On-going on an ad-hoc basis by the responsible partner organization.	The PAMF acts as the conduit to bring the partners together to discuss management issues and look for mutually acceptable solutions. The public consultation process is usually carried out by the partner organization most responsible for the resource management decision.	Gene Kimbley, General Manager
All working groups will assess the need for input by individuals and organizations outside of the Model Forest partnership.	PAMF	On-going on an ad-hoc basis.	The PAMF involves others as required, e.g. discussions with Aboriginal Peoples Television Network about programming featuring model forests. Outside groups may be involved in strategic planning sessions if asked by the PAMF.	Todd Olexson Susan Carr Mark Johnston

**Concern 4: Continued/Increased Public Input**

Action	Initiating Agency	Action Status	Comments/Current Status	Contact
Develop an ongoing consultation strategy for the PAMF area that seeks to include land users, interested groups, industry, Aboriginal people, and governments to provide input to the management of resources.	C&O	On-going	Consultation is achieved through the PAMF partners through their representatives on the Board of Directors. This is also accomplished by the Beyond Our Boundaries projects that bring together diverse groups to work out solutions locally that benefit all. Examples of successes include: the Cumberland Delta Moose Management Committee; the Athabasca Land Use Planning group; the Paspiwin Cultural Heritage site concept development group.	Todd Olexson Susan Carr

<p>Provide opportunities for the public to comment on or learn of the activities of the Prince Albert Model Forest.</p>	<p>C&amp;O, CIF</p>	<p>Phase III public survey completed, article series on-going, newsletters published bi-annually, workshops offered as required.</p>	<p>Normal communications tools and a co-sponsored workshop with PAMF and CIF give the public a chance to comment on or learn about the PAMF's activities. Several Saskatchewan weeklies publish the article series with 7-10 stories appearing each year. The Canadian Institute of Forestry's nation-wide Forestry Chronicle publishes PAMF news. The PAMF (<a href="http://www.pamodelforest.sk.ca">www.pamodelforest.sk.ca</a>) and Canadian Model Forest Network (<a href="http://www.modelforest.net">www.modelforest.net</a>) websites make available to international audiences all research reports, articles, work plans, annual reports and publications of the PAMF. Workshops are held in communities in central and northern Saskatchewan to share the knowledge gained by PAMF activities and research in areas of climate change, FireSmart, lake trout studies, woodland caribou studies, and various other topics. All projects funded by the PAMF credit the model forest program in their communications products.</p>
---	---------------------	--	---

## 4.2 Ecosystem Health

### Concern 1: Sustainability of the Prince Albert Model Forest area as an Ecosystem

Action	Initiating Agency	Action Status	Comments/Current Status	Contact
No actions.				

### Concern 2: Protection of Rare and/or Endangered Plant and Wildlife Species

Action	Initiating Agency	Action Status	Comments/Current Status	Contact
Expand the current inventory of endangered species (Plant and Animal).	SE, PANP	On-going	SE created a web page in 1997-1998 that allowed the distribution of endangered species information. In 2000 a Data Submission Form was added to assist in collecting information ( <a href="http://www.biodiversity.sk.ca">www.biodiversity.sk.ca</a> ).  The PANP works on this during opportune times. Their current study/inventory is being completed this year on the Northern Leopard Frog.	Chris Dunn Norm Stolle
Investigate and test methods that predict locations of rare and endangered species.	PAMF	Not initiated		Todd Olexson
Develop/promote a rare and endangered species sighting process in the PAMF area and the province. All information collected should be shared with the Prince Albert Model Forest partners and the Saskatchewan Conservation Data Centre.	PAMF, SE, PANP	On-going	SE created a web page in 1997-1998 that allowed the distribution of endangered species information. In 2000 a Data Submission Form was added to assist in collecting information ( <a href="http://www.biodiversity.sk.ca">www.biodiversity.sk.ca</a> ). SE along with MLCN initiated an Elk and Woodland Caribou sighting program in 2000 as part of the elk relocation project.  PAMF-Some research projects focused beyond mere sighting reports in this area include:  The woodland caribou research headed up by the University of Manitoba and PANP. Caribou are tracked by satellite collars and the habitat corridors through which they move are assessed to determine habitat preferences for caribou. This information will be used to better manage resources to provide for healthy populations of this species at risk.  The Naomi Carriere woodland caribou traditional ecological knowledge research project is gathering caribou and ecological observations from people living on the land in the La Ronge area and points north to map changes over time.	Todd Olexson Chris Dunn Norm Stolle Mark Johnston Susan Carr

			<p>The Lake Trout study at Prince Albert National Park is using hydro-acoustics combined with other research methodologies to determine the health of lake trout populations in Crean Lake applying findings to other affected populations.</p> <p>The PAMF is supporting the production of a new book for this province: The Flora of Saskatchewan. Project members include the Saskatchewan Conservation Data Centre. The book will include a section on rare and endangered flora in the province.</p> <p>The province conducts regular aerial surveys of elk and woodland caribou and the Conservation Data centre updates information continuously.</p>	
Develop a report on the current status of Woodland Caribou.	SE	Initiated	The Provincial management strategy is initiated. A study of caribou habitat in the PAMF area was also initiated in 2004.	Todd Olexson Chris Dunn

### Concern 3: Health of Riparian Areas

Action	Initiating Agency	Action Status	Comments/Current Status	Contact
Develop and test standards to classify riparian zones.	PAMF, Weyerhaeuser	Done	A standard developed by SE Forest Service has been in use by Weyerhaeuser.	Paul Maczek
Evaluate various riparian area harvesting methods, and monitor their effects. The intent will be to assess current harvesting methods and/or develop new harvesting methods. Specific operating procedures for sustainable harvesting of stream side and riparian areas will be developed for use, within, and outside of the model forest area.	Weyerhaeuser, PAMF, SE	Done	SE Forest Service has imposed standards that Weyerhaeuser has been following. The study of riparian areas is expected to be complete by the end of 2006.	John Doucette Chris Dunn Todd Olexson

### Concern 4: Resource Use and Development in Sensitive Areas

Action	Initiating Agency	Action Status	Comments/Current Status	Contact
PAMF and partners to work cooperatively within the partnership, and with others, to identify and protect areas that are sensitive and require some form of protection.	PAMF, SE, PANP, Partners	On-going	This is on-going as needed. The PANP is working on a project on woodland caribou.	Todd Olexson Chris Dunn Norm Stolle

In consultation with all land users, First Nations, Métis, scientists/researchers, interested groups and individuals, develop a set of guidelines, that identify timber harvesting and silvicultural objectives to address avoiding disturbance to rare and endangered species and ecosystems, critical habitat areas for fish and wildlife, wildlife travel routes, heritage/culturally significant areas, special use sites (e.g. medicinal plants), sacred sites, and other development sensitive areas.	SE, Weyerhaeuser	On-going	Weyerhaeuser has developed a Sustainable Forest Management Plan that included consultation to develop local Indicators and Targets for many of these values. Consultation is also conducted at every other phase of planning forest operations.	John Doucette Todd Olexson Chris Dunn
Develop and maintain, with input from all land users, Aboriginal people, scientists/researchers, interested groups and individuals, a comprehensive database of non-timber uses and resources.	SE, Weyerhaeuser, PAMF, Partners	On-going	On-going data collection. SE Forest Service has inventory sections.	Todd Olexson Chris Dunn
Develop ecosystem based management plans for all protected areas (e.g. Candle Lake Provincial Park, Prince Albert National Park). These plans should consider the ecosystem relationships beyond the human made boundaries of the area, allow natural processes to function where possible, and conserve ecological integrity and geological diversity. The planning process should also include and acceptable public consultation process.	SE, PANP, PAMF	On-going	Candle Lake has a Vegetation Management Plan.  Management planning process for PANP is still underway.	Norm Stolle

#### Concern 5: Research

Action	Initiating Agency	Action Status	Comments/Current Status	Contact
Link collaboratively with other research centres.	PAMF	On-going	Linkages with other research centres are achieved directly by the PAMF partnership with through the SRC, SE, PANP, and SFC who all have research programs or partnerships with other researchers (ex: SFC and GeoSpatial). The PAMF is also linking with researchers in Sweden to develop collaborative research programs with the Vilhelmina Model Forest.	Mark Johnston

Develop an environmental research strategy, which outlines the areas that most need further research performed (and what has been done) to better manage the land. This strategy needs to be kept current and will require periodic review. The strategy should also outline guidelines for research to minimize any impact to the environment.	PAMF, Partners	On-going	The S&T working group decides the direction for future research projects and monitors the progress of projects underway.	Darryl Sande
Provide a forum or mechanism for PAMF to disseminate information gained through research.	PAMF, CIF	On-going	The PAMF publishes a regular article series, research articles in the "The Forest Times" newsletter, and co-sponsors workshops with the CIF to share findings with communities. The websites of the PAMF and CMF Network publish all research papers produced by the PAMF.	Darryl Sande Mike Newman Susan Carr

#### Concern 6: Protection of the Water Resource

Action	Initiating Agency	Action Status	Comments/Current Status	Contact
Develop and maintain a water quality and quantity (of use) monitoring program to identify trends, develop indicators and baseline data, and to ensure the level of use is sustainable.	SE, PANP, Sask Water	On-going	Study of land and water use at Emma and Christopher Lakes. SE Environmental Protection has been monitoring major watershed primary stations for a number of years. Indicators of watershed health that have been analysed for in water quality testing are pH, species condition, D.O., temperature, general chemical and nutrients, metals, cyanide, mercury, and herbicides and pesticides. Hydrology study at Candle Lake.  PANP-Water quality work taking place on Wasquesiu and Kingsmere Lake. Monitoring water use in Wasquesiu.	Todd Swenson Norm Stolle
Organize a workshop on watershed management.	PAMF	Not initiated		
Develop watershed management plans for the Prince Albert Model Forest (across all jurisdictions). Plans should include strategies for dealing with the potential for climate change.	SE, PANP	Initiated	Watershed management plans for the PANP will be part of the Park Management Plan.	Norm Stolle

**Concern 7: Protect Ecological Integrity**

Action	Initiating Agency	Action Status	Comments/Current Status	Contact
Investigate, develop and test indicators to monitor ecological integrity in the PAMF area.	PAMF	Initiated	A draft (Forest Effects Monitoring) has been made and is being followed.	Dwayne Dye

**Concern 8: Biodiversity**

Action	Initiating Agency	Action Status	Comments/Current Status	Contact
Investigate, develop and test indicators to monitor biological diversity in the PAMF area.	PAMF	Initiated	A draft (Forest Effects Monitoring) has been made and is being followed.	Dwayne Dye

**Concern 9: Impacts on the Natural Environment**

Action	Initiating Agency	Action Status	Comments/Current Status	Contact
Develop a monitoring program to assess the impacts of all resource uses.	PAMF	On-going	<p>The PAMF partners are responsible for this level of public communication. For example, Weyerhaeuser informs their stakeholders of their reclamation activities through their long-term operating plans, their newsletters, and their on-site signage. As part of the Wapus Lake Elk restoration project, signs and articles informed the communities and the general public. In the recent public survey, many people surveyed recognized this project as one of the highlights of the work of the PAMF, reflecting a successful communication strategy.</p> <p>The PAMF research sites are signed along major thoroughfares in the region and provide the opportunity for the public to learn about our various resource management strategies firsthand by exploring the sites.</p>	Gene Kimbley John Doucette
Inform the public in reclamation activities to increase public awareness of responsible resource management.	PAMF, Partners	Done	Each of the partners are responsible for reporting reclamation activities to the public.	Gene Kimbley
Research, develop and test methods of avoiding/mitigating resource use impacts in the region, and implement the best procedures to correct the problem.	PAMF	On-going	Riparian work,	

**Concern 10: Non-Native Species/Exotics**

Action	Initiating Agency	Action Status	Comments/Current Status	Contact
Identify regionally non-native species to the PAMF area.	SE, PANP, PAMF	Done for SE PANP initiated	Study completed by U of S student Wade Summers. PANP is developing an invasive plant monitoring program. It is expected to be implemented in 2007.	Chris Dunn Todd Olexson Norm Stolle
Monitor/study the spread and movement of exotic species in the PAMF area.	PAMF	Done?	Some research was conducted by the PAMF.	Todd Olexson Dwayne Dye
Determine if existing exotic species have the potential to threaten the ecosystem integrity of the PAMF area, if they do, then determine how to control these species and reclaim the impacted area.	PAMF	Done?	Research has found that more disturbances or larger disturbances seem to equal more exotic species. However the exotic species do not seem to be persistent.	Todd Olexson Dwayne Dye
Research existing and develop new methods of controlling exotic species. Test document and monitor these methods in the PAMF area for use in other areas.	PAMF, Partners	On-going	SE initiated a provincial trial using pelleted deer baits in 2000. New baiting regulations have been established.	Todd Olexson Chris Dunn

**Concern 11: Forest Fragmentation due to Forestry**

Action	Initiating Agency	Action Status	Comments/Current Status	Contact
Research, develop and test harvesting patterns in the PAMF area to better understand how forestry operations can emulate natural disturbances.	PAMF, Weyerhaeuser	Ongoing	Weyerhaeuser is participating in the Provincial Ecosystem Monitoring program to establish paired Permanent Ecological Sample Plots	John Doucette
Investigate, develop and test tools to monitor and assess landscape patterns and fragmentation (compared to natural disturbance) in order to assess current landscape patterns that should be used.	PAMF, Weyerhaeuser, SE	Ongoing	SE Forest Service is leading the process with the development of the Natural Disturbance Emulation Standard. No tool is in common use.	John Doucette Todd Olexson Chris Dunn

**Concern 12: Water Control Structures**

Action	Initiating Agency	Action Status	Comments/Current Status	Contact
Inventory and assess the impacts (to the environment and users) of all water control structures impacting the PAMF area.	SE, PANP	Done	PANP-Kingsmere Lake has been assessed and the water control structure has been removed. Information acquired from this project will be applied to others. A summary of the concerns for other structures has been identified (2000). The Waskesiu Dam was replaced in 2005/06 with a riffle weir to improve ecological integrity.	Norm Stolle
Continue to process of restoring the Kingsmere River and Lake ecosystems, including the removal of the Kingsmere River dam, and taking action to restore the river's original natural characteristics.	PANP	Done	The PANP dam was removed in the fall of 1999. Monitoring continued to determine the level of success in achieving the specified goals. No work has been completed in the recent years	Norm Stolle
Monitor populations of both harvested and non-harvested fish species in those aquatic systems that can provide benchmark research on, and interpretations of the health of other aquatic systems in the regional ecosystems.	PANP	Done	Monitoring by the PANP as identified in the plan was carried out in 1999 and 2000.	Norm Stolle
All steps of the process and the effects of removing the Kingsmere River Dam should be documented and the information shared to establish whether other water control structures in the area should be removed.	PANP, SE	Done	Monitoring by the PANP as identified in the plan was carried out in 1999 and 2000. No monitoring has occurred since 2000.	Norm Stolle

**Concern 13: Conservation of Fish Resources**

Action	Initiating Agency	Action Status	Comments/Current Status	Contact
Identify and review all fisheries harvest levels and populations to determine if the fishery is sustainable.	SE, PANP	On-going	SE conducted a study at Bittern Lake on fish population in 2000. The Candle Lake Angler Survey (creel census) took place in 2000 and the Fisher Creek spawning run in 1999. At Candle Lake, walleye with radio transponders are being monitored to help identify fish movements and spawning areas.  The PANP is monitoring representative populations and key species.	Chris Dunn Todd Olexson Norm Stolle

Develop lake management plans for heavily used, over allocated, unique lakes, and others to manage the fishery in the best possible fashion. These management plans should include consultation with resource users, First Nations, Métis, interested groups and individuals.	SE, PANP	On-going as needed	SE is continuing discussions with the Candle Lake Fish Advisory Committee.  PANP's Aquatics Management Plan has proposed setting aside representative and benchmark lakes. This requirement is under review.	Chris Dunn Todd Olexson Norm Stolle
Increase the inventory programs for fish resources and aquatic ecosystems, to improve knowledge of local habitats (e.g. critical spawning areas). This information should be included in databases that can be used to plan commercial and industrial operations and developments so sensitive areas are not impacted.	SE, PANP	On-going work	SE conducted a spawning run inventory on Fisher Creek, a creel survey on Candle Lake, and a study of tagged walleye in the years 1998, 1999, and 2000 to help determine fish movements and spawning areas.  Habitat and fish monitoring work was done on Crean Lake in 2004 and 2005 by PANP.	Chris Dunn Todd Olexson Norm Stolle
Monitor all fish harvesting including angling, traditional subsistence use and other aquatic factors to indicate the health of the fishery and the aquatic ecosystems, and allow for timely management decisions.	SE, PANP	On-going	No additional significant work. Day to day harvest monitoring through compliance inspections and angler reports are conducted.  PANP monitors Lake Trout tag returns. No other use data is being collected at this time.	Chris Dunn Todd Olexson Norm Stolle

#### Concern 14: Conservation of Wildlife Resources

Action	Initiating Agency	Action Status	Comments/Current Status	Contact
Develop management options that promote the long-term viability of caribou. Strategies should be formulated in cooperation with all interested parties, land users, First Nations, and Métis.	SE, PANP, Weyerhaeuser	Initiated	SE's Provincial Management Strategy was initiated. Joint research on Woodland Caribou between PANP, SE and Weyerhaeuser is taking place. The study of caribou habitat in PAMF area was initiated in 2004.	John Doucette Chris Dunn Todd Olexson Norm Stolle
Gather/coordinate wildlife data held by the partners.	PAMF, Partners	On-going	Partners work together as needed. Ex: Caribou, elk	
Develop guidelines for harvesting and silvicultural operations to avoid disturbing rare species and ecosystems, critical habitat areas, wildlife travel routes, nesting sites, and other sensitive wildlife sites.	Weyerhaeuser, SE, PAMF	Done	SE's Provincial Guidelines are in place.	John Doucette Chris Dunn Todd Olexson
Research, develop and test tools to assist in the inventory of wildlife species.	PAMF	Initiated	The caribou habitat model has been developed.	Todd Olexson
Contribute to the genetic data bank at the University of Alberta by submitting animal tissues when available.	SE, PANP	On-going	As bison are being handled, tissue and blood samples are being sent out by the PANP. Protocol still needs to be set for other species.	Chris Dunn Todd Olexson Norm Stolle
Improve/develop inventories of critical habitat, bird communities, wildlife populations, and	SE, PANP	Done	The Saskatchewan Forest Ecosystem Classification (FEC) has completed its field sampling and has assembled	Chris Dunn Todd Olexson

disease.			<p>approximately 2000 plots worth of ecological site data from across Saskatchewan's provincial forests. Initial analysis of the data has occurred and first-approximation ecosites have been defined for the provinces four ecoszones. Refinement of the first approximation is occurring and the second and third approximations are scheduled to be published in the spring of 2007</p> <p>SE has developed aerial Survey protocol for Moose, elk and White tail deer.</p> <p>Critical habitat work between PANP, SE and Weyerhaeuser is being done for the Woodland Caribou.</p>	Mike McLaughlan Norm Stolle
Develop a management agreement for the free roaming bison herd (include the park, provincial and private land where they may roam) in consultation with surrounding landowners and users. The agreement must address the protection and management of the bison, while considering conflicts with other users.	PANP, SE	On-going	A meeting between PANP and a stakeholder group from the west side of the park has taken place. Contact with SE representatives has been initiated and an advisory group has been established.	Norm Stolle
Develop a management strategy for baiting along the Prince Albert National Park Boundary.	PANP, SE	Not initiated  Done	<p>No progress. Discussions have been taking place but no final strategy has been developed for the park boundary.</p> <p>A joint study looking at the impacts of baiting between PANP, SE, and the CCWHC has been completed.</p>	Chris Dunn Todd Olexson Norm Stolle
Develop a protocol for monitoring the park's free roaming bison population and encourage a population/habitat study.	PANP	On-going	PANP protocol is being documented. The methodology was completed in 1995 and has been carried out since.	Norm Stolle

### Concern 15: Pollution

Action	Initiating Agency	Action Status	Comments/Current Status	Contact
Investigate and identify all potential sources of pollution in the PAMF area or impacting the area.	PAMF, Partners	Not initiated	As of recent, there are no investigations taking place on potential sources of pollution. PAMF is ready to help with this project when initiated by the partners.	Gene Kimbley Mark Johnston
Develop strategies to deal with pollution. The strategies should identify innovative procedures that may be tested. The strategies should also identify areas that need further research.	PAMF, Partners	On-going	The PAMF partnership will work together to develop strategies to deal with pollution.	Gene Kimbley Mark Johnston

**Concern 16: Mineral Exploration and Mining (oil and gas, metallic and industrial minerals)**

Action	Initiating Agency	Action Status	Comments/Current Status	Contact
Develop a compensation (to industry) process, involving the mineral industry and affected users.	SE, SIR	On-going	SE and SIR work together as required.	Chris Dunn Todd Olexson

**Concern 17: Hunting and Fishing Season Dates**

Action	Initiating Agency	Action Status	Comments/Current Status	Contact
Fish and wildlife biologists in consultation with local users need to review the hunting and fishing season dates for the PAMF area. Portions of the area receive high levels of use and may require changes to the season dates or closures of certain areas to maintain sustainable harvest levels in the area.	SE, PANP	On-going	SE closed the elk hunting season in 1999 in the elk reintroduction area.  PANP's trout tagging and reporting system was carried out in 1999 and 2000. Seasons were changed to protect spawning lake trout.	Norm Stolle

**Concern 18: Timber Harvest Planning and Distribution**

Action	Initiating Agency	Action Status	Comments/Current Status	Contact
No actions.				

**Concern 19: Timber Harvesting Duration**

Action	Initiating Agency	Action Status	Comments/Current Status	Contact
No actions.				

**Concern 20: Harvesting Methods (timber)**

Action	Initiating Agency	Action Status	Comments/Current Status	Contact
Investigate, develop and test new harvesting methods to minimize the impact of forestry operations on the environment and emulate natural disturbances. Methods used should have the least impact to the ecosystem while remaining economically viable.	PAMF, Weyerhaeuser	On-going	Weyerhaeuser- On-going	John Doucette
Investigate, develop and test alternate harvesting methods for use on sensitive sites.	PAMF, Weyerhaeuser	On-going	Weyerhaeuser- On-going	John Doucette
Evaluate methods of further increasing the efficiency in harvesting and sorting operations.	Weyerhaeuser	On-going	Weyerhaeuser- On-going	John Doucette

**Concern 21: Need for Reforestation**

Action	Initiating Agency	Action Status	Comments/Current Status	Contact
In the PAMF area, evaluate, develop and test Silviculture techniques, site preparation equipment and techniques that will improve both natural and planted renewal in the planning area and the province.	PAMF, Weyerhaeuser, CFS	On-going	Weyerhaeuser- On-going  Currently there are not any silvicultural techniques in the PAMF area implemented by SE.  CFS has not had research on Silviculture practices in the past 10 years. Work with the First Nations of Montreal Lake and La Ronge has been done to help complete Silviculture in fire salvage areas.	John Doucette Shane Vermette Mike Newman
Evaluate the feasibility of using prescribed burn as a site preparation method.	PAMF, SE	Not initiated	Only slash piles are being burned at harvested sites but not for site preparation.	Todd Olexson
Develop a standard or standards that defines NSR.	SE, Weyerhaeuser	Done	Provincial Standards were approved in 2004.	John Doucette
Update the inventory of NSR and regenerated sites and prioritize areas for renewal if required.	SE, Weyerhaeuser	On-going	Weyerhaeuser- On-going	John Doucette
If present, reduce any accumulated backlog of not satisfactorily restocked land (NSR).	SE, Weyerhaeuser	On-going	Weyerhaeuser- Area by area.	John Doucette

**Concern 22: Fire**

Action	Initiating Agency	Action Status	Comments/Current Status	Contact
Develop a fire management plan for the Prince Albert Model Forest area. This should be done involving the PAMF partnership, forest industry, local residents, land users, Métis, and First Nations. The plan will be integrated with existing plans/mandates of the various jurisdictions, and indicate areas of high and low priority for suppression activities.	PAMF, SE, PANP, Partners	Done	The Fire-Smart Program has been used at various communities to evaluate the fire hazards within their yards. Fire Smart has been used in Candle Lake, Montreal Lake, Weyakwin, La Ronge, Stanley Mission, Grandmothers Bay, Hall lake, Emma Lake, Christopher Lake, McPhee Lake, and Sturgeon Lake. All communities surrounding the PAMF area. Community protection plans are being developed.  SE worked with CFS to try and develop a model in which fire simulations could help identify the best fuel treatment options. As a result two papers were written; <i>Applying the Concept of Fuel Treatment Spatial Design to the Boreal Mixedwood of Western Canada</i> and <i>Using Landscape-Based Decision Rules to Prioritize Locations for Placement of Fuel Treatments in the Boreal Mixedwood of Western Canada</i> . The actual interagency fire management plan that was to follow was never undertaken in the manner discussed at early workshops hosted on the specific topic. However Parks	Chris Dunn Todd Olexson Paul Maczek Mike Newman Norm Stolle

			Canada has a fire management strategy for the park. Prescribed burning has taken place in 2006.	
Investigate, develop and test tools for predicting fire, assessing impacts of different control options and predicting/identifying priorities.	PAMF	Done	No further action by the PAMF.	Chris Dunn Todd Olexson

### Concern 23: Forest Insect and Disease Management

Action	Initiating Agency	Action Status	Comments/Current Status	Contact
Research, develop and test tools to assist in modeling and predicting insect and disease risks and infestations. (Due to the current outbreak, particular attention should be focused on spruce budworm.)	PAMF, CFS SE	Done	CFS worked with SE and PANP when they had the Spruce Budworm infestations.	Mike Newman
Assess the impact of different methods of control.	PAMF, SE, Weyerhaeuser, CFS	On-going	There was a project essaying the impact of Bt on non-specific moth species and the possible impact of the spray on birds.	Mike Newman
Research, develop and test tools to assist in insect and disease control options. (Due to the current outbreak, particular attention should be focused on spruce budworm)	PAMF	On-going	A prediction model has been developed and used for Jack Pine budworm. The model is based on the finding that breakouts of Jack Pine budworm tend to occur in the northern part of SK about 3 years after a drought.	Mike Newman

### Concern 24: Operating Ground Rules

Action	Initiating Agency	Action Status	Comments/Current Status	Contact
Operating guidelines to reflect approved Twenty-year Plan including requirements for implementation of sustainable, ecosystem-based management. After the operating guidelines are initially updated, the principles of adaptive management should be applied to continuously review and modify the guidelines as necessary	Weyerhaeuser, PAMF	On-going	Standards and guidelines have been developed for the Weyerhaeuser FMA. They are reviewed and revised each year.	John Doucette

### Concern 25: Forestry Roads (access)

Action	Initiating Agency	Action Status	Comments/Current Status	Contact
Develop an access management strategy for the PAMF area, involving local users, Métis, First Nations, governments, industry, and communities	SE, Weyerhaeuser	On-going	Weyerhaeuser does this on a very localized level through the regular consultation process.	John Doucette

**Concern 26: Forestry Roads (impacts-erosion)**

Action	Initiating Agency	Action Status	Comments/Current Status	Contact
Develop and test a suitable and effective vegetation mix consisting of native and non-invasive plant species for erosion control.	SE, Weyerhaeuser, PAMF	Done	SE has developed an acceptable seed mix and guidelines that use native species for reclamation.	John Doucette Chris Dunn Todd Olexson

**Concern 27: Forestry Roads (stream crossings)**

Action	Initiating Agency	Action Status	Comments/Current Status	Contact
No actions.				

**Concern 28: Forestry Roads (culvert sizing; fish bearing streams)**

Action	Initiating Agency	Action Status	Comments/Current Status	Contact
Test the usage of the fish species richness predictive model (and others) to identify streams likely to support game or commercial fish species, and install culverts designed to accommodate fish passage.	Weyerhaeuser, PAMF, SE	Done	The use of the fish species richness predictive model was not acceptable to DFO. DFO determined which streams they considered to be fish bearing. Weyerhaeuser designs and installs crossings to accommodate fish passage whenever they are required.	John Doucette

**Concern 29: Forestry Roads (culvert sizing; non-fish bearing streams)**

Action	Initiating Agency	Action Status	Comments/Current Status	Contact
No actions.				

**Concern 30: Forestry Roads (removal of stream crossing structures)**

Action	Initiating Agency	Action Status	Comments/Current Status	Contact
No actions.				

**Concern 31: Forestry Roads (location)**

Action	Initiating Agency	Action Status	Comments/Current Status	Contact
No actions.				

**Concern 32: Forestry Roads (closures)**

Action	Initiating Agency	Action Status	Comments/Current Status	Contact
Identify roads that access, or allow access, to sensitive wildlife habitat.	SE, Weyerhaeuser	On-going	They are identified in conjunction with the 5 year operating plans of SE.  Weyerhaeuser- On-going	John Doucette
Annually identify and reclaim roads that are no longer needed for forestry operations.	Weyerhaeuser, SE, PANP	On-going	Weyerhaeuser- On-going	John Doucette
Re-evaluate all old roads and their closure status during five year planning. Reuse old roads whenever possible to minimize access created.	Weyerhaeuser, SE, PANP	On-going	Weyerhaeuser- On-going	John Doucette

**Concern 33: Grazing**

Action	Initiating Agency	Action Status	Comments/Current Status	Contact
Assess the impacts to ecosystem health of grazing in the Prince Albert Model Forest area.	SE	Not initiated		

**Concern 34: Shoreline Management (docks, boat houses)**

Action	Initiating Agency	Action Status	Comments/Current Status	Contact
No actions.				

**Concern 35: Service Corridors (e.g. power lines)**

Action	Initiating Agency	Action Status	Comments/Current Status	Contact
No actions.				

**Concern 36: Fire Salvage**

Action	Initiating Agency	Action Status	Comments/Current Status	Contact
Complete the development and implementation of a new, ecologically based fire salvage policy that identifies how green timber, within burns, will be identified and when green and burned timber should not be harvested.	SE	Initiated	A draft of provincial fire salvage standards and guidelines has been made by SE. It is expected to be finalized in 2007 after an industry and public review.	Gigi Pittoello
Develop a research and monitoring program to identify the impacts of fire salvage operations.	SE	Not initiated	No research is planned in this area. When the fire salvage standards are finalized, compliance monitoring will be conducted to ensure that the standards are followed.	Gigi Pittoello

**Concern 37: Forest Inventory**

Action	Initiating Agency	Action Status	Comments/Current Status	Contact
Develop a more detailed ecosystem based forest vegetation inventory, which can provide better information to assure sustainable levels are being allocated and harvested.	SE, Weyerhaeuser, PAMF, PANP, LLIB, MLCN	Not initiated for PANP  Done for the PA FMA  Initiated for LLRIB	PANP is not able to commit to the development of a new vegetation inventory at this time.  Weyerhaeuser initiated a new forest inventory in 1999 and completed it in 2005 for the PA FMA.  LLRIB has a timber supply agreement and is working towards a FMA.	John Doucette Tom J. McKenzie Cliff Jessup Norm Stolle
Assist in and test the Provincial forest ecosite classification system so that it can be implemented throughout the forested regions of Saskatchewan.	PAMF	Done	IRM-Completed	Gene Kimbley
Develop an inventory of human land uses and developments in the forest.	PAMF	Done	IRM-Completed for land use planning process requirements.	Gene Kimbley
Investigate, develop and test models and tools for predicting growth, biological future states, and cost-effective ecosite mapping.	PAMF	Done		

### 4.3 Integrated Resource Management

#### Concern 1: Game and Corridor Preserves

Action	Initiating Agency	Action Status	Comments/Current Status	Contact
No action.				

#### Concern 2: Candle Lake Game Preserve

Action	Initiating Agency	Action Status	Comments/Current Status	Contact
No action.				

#### Concern 3: Aesthetic Buffers (around resort lakes and recreational rivers)

Action	Initiating Agency	Action Status	Comments/Current Status	Contact
Identify recreation areas that may require aesthetically sensitive management.	Weyerhaeuser, SE	Done for the PA FMA	Initial site inspection was completed 2000 by SE.  Weyerhaeuser submitted a map of visually sensitive areas for the PA FMA.	John Doucette

#### Concern 4: Buffer Zones (roads)

Action	Initiating Agency	Action Status	Comments/Current Status	Contact
Investigate, develop and test modified harvesting practices and ways of incorporating forest landscape design principles to manage aesthetics along roadways.	Weyerhaeuser,	On-going	Weyerhaeuser- On-going; monitoring to continue.	John Doucette
Identify roads needing/not needing special management because of aesthetic values.	SE, Weyerhaeuser	Not initiated  On-going	SE-Not initiated.  Weyerhaeuser-Internal, no comprehensive list.	John Doucette Chris Dunn Todd Olexson

#### Concern 5: Buffer Zones (cabins)

Action	Initiating Agency	Action Status	Comments/Current Status	Contact
Develop a consultation process that allows cabin owners the opportunity for consultation prior to harvesting activities.	Weyerhaeuser, SE	Done	Consultation is part of the Annual Operating Plan process for the Weyerhaeuser FMA.	John Doucette

**Concern 6: Traditional Resource Use Cabins**

Action	Initiating Agency	Action Status	Comments/Current Status	Contact
Initiate a process where agencies responsible for land management, First Nations and all impacted user, develop a management plan. The plan should outline the “rules” for First Nations cabins built incidental to the Treaty right. The PAMF Association Inc. may facilitate the discussions between SERM and First Nations in the Prince Albert Model Forest area.	SE, MLCN, LLRIB, PAGC, FSIN	Done		Chris Dunn Todd Olexson

**Concern 7: Recreational Cottages**

Action	Initiating Agency	Action Status	Comments/Current Status	Contact
No action.				

**Concern 8: Temporary Hunting Shelters**

Action	Initiating Agency	Action Status	Comments/Current Status	Contact
No action.				

**Concern 9: Development**

Action	Initiating Agency	Action Status	Comments/Current Status	Contact
Assess potential future states of the environment with different levels of development.	PAMF	Not initiated		Todd Olexson

**Concern 10: Development Along the Major Highway Corridors (e.g. Highway 2)**

Action	Initiating Agency	Action Status	Comments/Current Status	Contact
No action.				

**Concern 11: Lakeshore Development**

Action	Initiating Agency	Action Status	Comments/Current Status	Contact
No action.				

**Concern 12: Sand and Gravel Quarries**

Action	Initiating Agency	Action Status	Comments/Current Status	Contact
Develop new guidelines, for the allocation and development of sand and gravel resources (with involvement of the resource users, First Nations and land management agencies, and other government departments).	SE	Done	Sand and Gravel policy complete.	Chris Dunn Todd Olexson

**Concern 13: Trails/Locations (hiking, ATV's (including snowmobiles), cross country skiing)**

Action	Initiating Agency	Action Status	Comments/Current Status	Contact
Provide educational material to trail users (special effort should be made for ATV and snowmobile users as these machines have a greater potential to impact the environment).	SE, PANP	Not initiated	No progress recently by SE or PANP. PANP is looking at developing operational guidelines for staff that use ATV's and OSV's.	Chris Dunn Todd Olexson Norm Stolle
Create an inventory of existing trail systems to assess the need for future development and to ensure that trail systems are integrated.	SE, PANP, PAMF, Weyerhaeuser	Not initiated Initiated	No progress recently by SE. PANP is in the process of completing a trail review.	Chris Dunn Todd Olexson Norm Stolle

**Concern 14: Trespass**

Action	Initiating Agency	Action Status	Comments/Current Status	Contact
Develop an educational program that identifies the advantages of obtaining permits/leases for cabins, and the possible outcomes of unregulated development in the forest.	SE	Not initiated		Chris Dunn Todd Olexson

**Concern 15: Need for Effective Enforcement Programs**

Action	Initiating Agency	Action Status	Comments/Current Status	Contact
Review the resources provided for law enforcement. The review must consider officer safety, agency mandate, and available resources. The review should also identify areas where resources are needed, and be made available to the public.	PANP, SE	Done On-going	PANP's Law plan has been approved and is being implemented. SE reviews new technologies, strategies and resource needs on an on-going basis.	Chris Dunn Todd Olexson Norm Stolle



**Concern 19: Trapping**

Action	Initiating Agency	Action Status	Comments/Current Status	Contact
Develop an inventory of human land uses and developments.	PAMF, SE, PANP	Done	Completed for land use planning process requirements. IRM developed a 'values' map and a sharable database.	Chris Dunn Todd Olexson Norm Stolle

**Concern 20: Need to Plan and Manage so that Recreational Activities and Industrial Activities are not in Conflict**

Action	Initiating Agency	Action Status	Comments/Current Status	Contact
Develop an inventory of all human land uses and developments.	SE, PANP, PAMF	Done	Completed for land use planning process requirements. IRM developed a 'values' map and a sharable database.	Chris Dunn Todd Olexson Norm Stolle
		Initiated	A monitoring program is being developed by PANP to look at monitoring human use in and around the park.	

**Concern 21: Transportation of Timber**

Action	Initiating Agency	Action Status	Comments/Current Status	Contact
No action.				

**Concern 22: Planning**

Action	Initiating Agency	Action Status	Comments/Current Status	Contact
No action.				

**Concern 23: Decision-Making/Shared Jurisdiction**

Action	Initiating Agency	Action Status	Comments/Current Status	Contact
No action.				

**Concern 24: Forestry Practices Should Implement the Principles of Sustainable and Integrated Resource Management**

Action	Initiating Agency	Action Status	Comments/Current Status	Contact
Provide training to staff and harvesting contractors, in the region, on sustainable/ecosystem based management and the operating guidelines in the area.	Weyerhaeuser	On-going	Training is provided as part of Weyerhaeuser's Environmental Management System for the PA FMA.	John Doucette

Monitor forestry operations and other resource uses to ensure that they are sustainable.	SE, PAMF	On-going	SE has a process in place that monitors forest industries and ensures compliance with management plans, legislation and regulation. A draft-monitoring framework was developed with the science advisory board. The draft will be taken out for review.	Chris Dunn Todd Olexson
PAMF will provide information on the sustainable use of forestlands located outside of the model forest area.	SE, CIF, PAMF, Weyerhaeuser	On-going	PAMF shares known information when possible.	Chris Dunn Todd Olexson Darryl Sande

**Concern 25: Protection/Respect of Traditional Use Areas**

Action	Initiating Agency	Action Status	Comments/Current Status	Contact
Provide training and development in cultural and heritage resource protection to all appropriate staff.	Partners	Done  On-going	SE's Aboriginal Cultural Awareness Program is completed.  Weyerhaeuser- On-going  CFS has Aboriginal and Cultural Awareness programs that are available.	Mike Newman
Prince Albert Model Forest will report annually on the use of public input in planning and decision-making.	PAMF, Partners	On-going	CFS just completed a public awareness program. Their major industrial partner Weyerhaeuser conducts an annual operating plan review. PANP just completed a strategic plan.	Mike Newman
Develop an inventory of traditional uses and culturally significant sites. The inventory should be compatible with those used by the partner organizations and other organizations outside the partnership.	PAMF, SE, Weyerhaeuser, PANP, MLCN, PAGC, LLRIB	On-going for the PA FMA	The project will be lead by the First Nations partners of the PAMF and assisted by the PAMF where necessary. The LLRIB and MLCN have begun documenting the bands traditional areas. MLCN is doing their project with the PANP. A cultural site inventory is being updated by PANP as resources become available.  Although various inventories have been completed by partners and by projects funded by the model forest, they have not yet brought together all the results. This may be completed this year through work with the Virtual Data Warehouse.	John Doucette Chris Dunn Todd Olexson Tom J. McKenzie Cliff Jessup Norm Stolle Gene Kimbley Henry Fremont
Research, develop and test models that predict culturally significant and traditional use areas.	PAMF	Done		Todd Olexson

## 4.4 Local Level Indicators

### Concern 1: Criteria and Indicators

Action	Initiating Agency	Action Status	Comments/Current Status	Contact
Develop indicators to monitor the economic benefits and economic sustainability of the PAMF area.	PAMF	On-going	PAMF has educational programs such as the Junior Forest Rangers, and the Northern Lights School Division Curriculum that are educating communities on sustainability so that they can manage themselves in such a manner. The PAMF is also working on a proposal for their Phase IV term which is focused on sustainable communities.	Susan Carr
To ensure sustainable use, develop a monitoring program using indicators to monitor the effects of all land and resource uses, including forestry operations, on the ecosystem health in the PAMF area and surrounding region.	PAMF		LLI-The EH/LLI Working Group has developed an initial list of C&I and has assigned them to on or more of the partners. Due to other commitments, baseline information will be forthcoming now that the PAMF has an IRM plan, a monitoring program can be established with respect to this. This will happen in the next fiscal.	
Work with and develop cooperative working relationships with other organizations, individuals and groups to enhance the monitoring of the PAMF area (e.g. volunteer monitoring).	PAMF, Partners	On-going	CDC collects information upon sighting.  Nature Saskatchewan does a Christmas Bird Count.  The elk and woodland caribou-sighting program was initiated 2000 by SE and MLCN.	Chris Dunn Todd Olexson Mike Newman Gene Kimbley

### Concern 2: Dealing with Change (adaptive management)

Action	Initiating Agency	Action Status	Comments/Current Status	Contact
No action.				

## 4.5 Values and Benefits

### Concern 1: Concerns and Recommendations

Action	Initiating Agency	Action Status	Comments/Current Status	Contact
No action.				

### Concern 2: Training and Education Opportunities for Aboriginal People in Resource Management

Action	Initiating Agency	Action Status	Comments/Current Status	Contact
In cooperation with First Nations and Métis, investigate present and future professional and technical job needs within the forest industry.	PAMF, Partners	On-going	<p>Work with the Northern Labour Markets Forestry Training Subcommittee to track job requirements within the forest industry over a 5-year period is taking place as well as work with Saskatchewan Post Secondary Education, Saskatchewan Institute of Applied Science and Technology, and the Saskatchewan Indian Institute of Technology to provide training opportunities.</p> <p>PAMF is working with PAGC and FNIFM Inc., to explore capacity building needs in Aboriginal communities and address various aspects each year within the PAMF work plan. With FNIFM Inc. this year, the PAMF supported workshops to train members of the seven First Nations communities in basic skills and certifications required for their season's tree-planting activities.</p>	Mike Newman
Assist in providing technical and management training programs.	PAMF, Partners	On-going	This is accomplished through our partner organizations. The FNFP part of CFS programming and the Forestry Training Subcommittee fund over 1 million dollars in forestry training each year.	Mike Newman
Investigate and promote existing training opportunities for Aboriginal people in forestry and other potential areas of employment.	PAMF	On-going	<p>Working with PAGC and FNIFM Inc., the PAMF provides funding to support capacity building for Aboriginal communities. See FNIFM Inc. above.</p> <p>Working with a team led by SFA, the PAMF is supporting the start-up of a Junior Forest Rangers program in Saskatchewan. The program is in its initial phases in the province and has proven to be a successful way of introducing youth into forestry careers.</p> <p>The PAMF supports the Askiy-Nih traditional curricula</p>	Duane Hiebert Mike Newman Ron Burns Liff Buettner Glenn Lafleur

			program with the Northern Light School Division. The program teaches students about resource-based employment opportunities within their communities and includes courses on wild rice harvesting, trapping, fishing, forestry, energy and mines. In each grade, students are taught the variety of skills by qualified members within their communities. In the senior grades, students become certified in various safety course and equipment operations. By the time, they graduate; they have earned credits towards college education, facilitating the transition to further studies. Students graduate with a hands-on appreciation of the various employment opportunities that exist within their own communities.	
--	--	--	--	--

**Concern 3: Sustainable Economic and Social Benefits**

Action	Initiating Agency	Action Status	Comments/Current Status	Contact
Research diversification opportunities in the Prince Albert Model Forest area (other than traditional forestry).	PAMF	On-going	Tourism Diversification Initiative (BoB), Traditional Resource Use Curriculum, and research into the ecology of mushrooms with Agfood are all other uses of the forest other than traditional forestry that are taking place or are being researched.	Gene Kimbley

**Concern 4: Tourism/Eco-tourism**

Action	Initiating Agency	Action Status	Comments/Current Status	Contact
Develop, with input from the partners, tourism operators, industry and other interested groups, guidelines to maintain the attractiveness of landscapes used for recreation.	SE	On-going	Scenic and recreational procedures have been developed as part of the Weyerhaeuser 20 year plan and operating guidelines.	Chris Dunn Todd Olexson
Assist in the analysis of opportunities for tourism (e.g. use GIS to identify possible places for locating ecotourism activities)	PAMF, Partners	Not initiated	No progress	Todd Olexson
Develop indicators of sustainable tourism/recreation and methods of measuring the economic benefits to the area.	PAMF, Partners	Initiated	CFS has been working on documenting the economic impact of some non-forest products such as hunting.	Mike Newman
PAMF partnership will investigate diversification initiatives (including tourism) within the PAMF area.	PAMF, Partners	Initiated	Some work on value added and diversification is being carried out at SFC.	Mike Newman

**Concern 5: Other Forest Products (e.g. berries, moss, wild rice, mushrooms, and medicines)**

Action	Initiating Agency	Action Status	Comments/Current Status	Contact
Develop an enforceable allocation system to ensure that a sustainable harvest level is being attained	SE	Initiated	Currently only how much is being harvested is being tracked.	Todd Olexson Earl Bourlon
Develop a permitting system for the PAMF area so that current harvest levels of other forest products is known.	SE	Done	SE-Commercial operators are licensed and Forest Products Permits are required to harvest.	Todd Olexson
Develop an inventory of other forest products. This inventory should be compatible with the provincial forest inventory and other partner databases.	SE	Not initiated	FEC maps have been used and developed but are not specifically for other forest products but do include them.	Todd Olexson
PAMF and partners investigate, develop and test technology to remotely identify and inventory other forest products.	PAMF, SE	Not initiated		
Develop guidelines for sustainable harvest practices of other forest products, with input from user, scientists, Métis and First Nations.	SE	Not initiated		
Conduct research into other forest products, sustainable harvest levels, uses and market development. Involve the PAMF partnership, land users, First Nations, researchers, universities, Métis, and all other interested groups and individuals.	SE, PAMF	Not initiated		

## 4.6 Implementation Strategies

Action	Initiating Agency	Action Status	Comments/Current Status	Contact
Assign a person, or group of people, to over-see the implementation and monitoring of the plan.	PAMF, Partners	Done	A PAMF staff person was recruited for plan implementation and coordination.	
Conduct yearly assessments of the plan with continued public input. The findings of the assessments will be used to make modifications to the plan.	PAMF, Partners	Initiated	The assessment of the plan will be completed by September 30, 2006	Chris Dunn Todd Olexson Mike Newman
In the year 2001, prepare a "State of the Prince Albert Model Forest" report based on the findings of the previous years assessments. Release this report to the public in an open forum.	PAMF	Not initiated		Chris Dunn Todd Olexson
After 2001, evaluate (major evaluations) the plan every five years.	Partners, PAMF	Initiated	A major evaluation of the PAMF Phase III period is being conducted over the summer of 2006. A new proposal for Phase IV is being looked at for the term through from 2007 to 2012.	Gene Kimbley Susan Carr
Hold regular public meetings/consultations to provide opportunities to raise concerns, answer questions and present plans.	PAMF, CIF	On-going	Meetings and consultations are conducted as needed. CIF is not directly engaged in this activity.	Darryl Sande
Hold consultations with individual interests for specific concerns.	PAMF	On-going	Consultations are held when necessary or needed.	Gene Kimbley
Investigate, develop and test conflict resolution methods.	PAMF	Done	Reference material is housed in the PAMF library.	Susan Carr

## Contact List

Agency	Name	Business Phone	Fax	E-mail
Canadian Institute of Forestry	Darryl Sande	953-1793	953-0447	<a href="mailto:darryl.sande@weyerhaeuser.com">darryl.sande@weyerhaeuser.com</a>
Federation of Saskatchewan Indian Nations	Patrick Derocher	(306) 236-4437	(306) 236-3373	
FMFP, SE	Paul Maczek	953-2428		<a href="mailto:pmaczek@serm.gov.sk.ca">pmaczek@serm.gov.sk.ca</a>
Forest Service, SE	Dwayne Dye	953-2339		
Forest Service, SE	Shane Vermette	953-2346		<a href="mailto:svermette@serm.gov.sk.ca">svermette@serm.gov.sk.ca</a>
Forest Service, SE	Rory McIntoch	953-3617		<a href="mailto:rmcintosh@serm.gov.sk.ca">rmcintosh@serm.gov.sk.ca</a>
Forest Service, SE	Gigi Pittoello	953-2450		<a href="mailto:gpittoello@serm.gov.sk.ca">gpittoello@serm.gov.sk.ca</a>
Forest Service, SE	Mike McLaughlan	953-2436		<a href="mailto:mmclaughlan@serm.gov.sk.ca">mmclaughlan@serm.gov.sk.ca</a>
Forest Service, SE	Rod Thompson	953-2454		<a href="mailto:rthompson@serm.gov.sk.ca">rthompson@serm.gov.sk.ca</a>
Lac La Ronge Indian Band	Tom J. Mckenzie	(306) 635-2310	(306) 635-4455	
Montreal Lake Cree Nation	Cliff Jessup	(306) 663-5349		<a href="mailto:jessup@sasktel.net">jessup@sasktel.net</a>
Prince Albert Grand Council	Cliff Buettner	765-5300	(306) 922-5544	<a href="mailto:cbuettner@pagc.sk.ca">cbuettner@pagc.sk.ca</a>
Prince Albert National Park	Norm Stolle	(306) 663-4536	(306) 663-5585	<a href="mailto:Norman.stolle@pc.gc.ca">Norman.stolle@pc.gc.ca</a>
Prince Albert National Park	Dan Frandsen			<a href="mailto:dan.frandsen@pc.gc.ca">dan.frandsen@pc.gc.ca</a>
RSB, SE	Ryan Mulligan	953-2518		
RSB, SE	Doug Campbell	(306) 787-2314		<a href="mailto:dcampbell@serm.gov.sk.ca">dcampbell@serm.gov.sk.ca</a>
Saskatchewan Environment	Chris Dunn	953-2675	953-2502	<a href="mailto:Cdunn@serm.gov.sk.ca">Cdunn@serm.gov.sk.ca</a>
Saskatchewan Environment	Todd Swenson	953-3477		
Saskatchewan Research Council	Mark Johnston	(306) 933-8175	(306) 933-7446	<a href="mailto:Johnston@src.sk.ca">Johnston@src.sk.ca</a>
Saskatchewan Watershed Authority	John Durban			
SIR	Murry Rogers			
Weyerhaeuser	John Doucette	953-5128	(306) 953-0447	<a href="mailto:john.doucette@weyerhaeuser.com">john.doucette@weyerhaeuser.com</a>
SE	Earl Bourlon			<a href="mailto:ebourlon@serm.gov.sk.ca">ebourlon@serm.gov.sk.ca</a>

## Key to Abbreviations

<b>Abbreviation</b>	<b>Meaning</b>
BoB	Beyond Our Boundaries working group of the Prince Albert Model Forest
CAKE	Communications and Knowledge Exchange working group of the Prince Albert Model Forest
CFS	Canadian Forest Service
CIF	Canadian Institute of Forestry
CMFN	Canadian Model Forest Network
FMA	Forest Management Agreement
FSIN	Federation of Saskatchewan Indian Nations
GeoSpatial	GeoSpatial Consulting Incorporated
LLRIB	Lac La Ronge Indian Band
MLCN	Montreal Lake Cree Nation
PA	Prince Albert
PAGC	Prince Albert Grand Council
PAMF	Prince Albert Model Forest
PANP	Prince Albert National Park (Parks Canada)
Partners	The fourteen partners of the Prince Albert Model Forest
SaskWater	Saskatchewan Water Corporation
SE	Saskatchewan Environment
SEM	Saskatchewan Energy and Mines
SIR	Saskatchewan Industry and Resources
Weyerhaeuser	Weyerhaeuser, Saskatchewan Timberlands (Prince Albert)
FNIFM Inc	First Nations Island Forest Management Incorporated

## **Literature Cited**

Prince Albert Model Forest Association Inc. 2000. Prince Albert Model Forest Ecosystem Based Integrated Resource Management Plan.

Prince Albert Model Forest Association Inc. 2001. Prince Albert Model Forest Ecosystem Based Integrated Resource Management Plan Annual Review; January 1,2000-December 31, 2000.