

Community Profiles

Cumberland House Cree Nation

Location: Approximately 157 km northeast of the town of Carrot River in east-central Saskatchewan.

Population: Approximately 1500 people with about 831 of the total population belonging to Cumberland House Cree Nation, which includes the Pine Bluff, Muskeg River and Budd's Point bands.

Notes: Oldest permanent settlement in Western Canada.

Shoal Lake First Nation

Location: 92 km east of Nipawin, Saskatchewan, on the edge of the Carrot River. The Shoal Lake reserve spans 1479 hectares and is located on the southern edge of the Delta.

Population: 786 registered with approximately 628 living on the reserve.

Notes: The name "Shoal Lake" is derived from the Cree word "pahkwawsahaikanik," meaning "the water is shallow".

Red Earth First Nation

Location: 75 km east of Nipawin on the banks of the Carrot River.

Population: Total registered population is 1288 with 1104 people residing on reserve.

Notes: The name "Red Earth" refers to the reddish clays of the Carrot River.

Opaskwayak Cree Nation

Location: On the east side of the Delta. It is the only First Nation community within the Delta boundaries on the Manitoba side.

Population: Total population is 4652 with 2850 people residing on reserve.

Notes: OCN traditional hunting territory spans the Manitoba/Saskatchewan border allowing OCN hunters to hunt in both provinces.

Cooperative Movements in Your Community

The Chief and Council of each First Nation community support conserving moose so they can be used for community sustenance and for the benefit of future generations of hunters. Each community is asking for your participation in conservation initiatives outlined in this pamphlet.

If you have any questions please call Edward Kowal, Chair of the CDMMC:

Edward H. Kowal
Wildlife Program Manager
Provincial Elk Manager
Saskatchewan Environment
Box 3003 Prince Albert, SK
S6V 6G1
(306) 953-2695
EKowal@serm.gov.sk.ca

The CDMMC would like to extend thanks to the Prince Albert National Park for providing the photographs of moose used in this pamphlet.



MA MAW WECHEHETOWIN
working together/helping each other

MOOSE MANAGEMENT

IN THE CUMBERLAND DELTA



Funded by the Prince Albert Model Forest



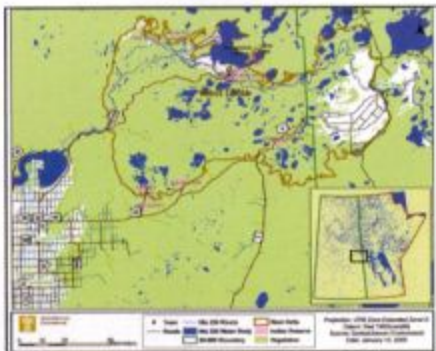
MA MAW WECHEHETOWIN
working together/helping each other

Produced on behalf of the
Cumberland Delta
Moose Management Committee
March 2007

The Cumberland Delta

Located in northern Saskatchewan and extending into Manitoba, the Cumberland Delta is the largest inland delta in North America. It spans an area of 5000 km² and is composed of wetlands among meandering channels that branch off from the Saskatchewan River. It also includes levees, dykes and other natural and man-made features. The Cumberland Delta is an ideal moose habitat.

The Cumberland Delta, Pasquia Hills and Porcupine once supported two-thirds of the province's moose



population at densities two to three times higher than other parts of the province that supported moose populations. However, natural and man-made influences on the landscape have created conditions that have impeded the historical health the landscape and its moose population. It is important, then, to create awareness of the importance of moose conservation, which can result in cooperative efforts to preserve the moose population for future generations.

This is especially true in the Cumberland Delta.

The Delta provides an ideal habitat for moose and in order for them to thrive we need to facilitate and preserve the population. Each of us who enjoys the natural beauty of the Delta and its wildlife resources can take an active role in wildlife conservation.



Conserving Moose for the Future

Everyone who relies on the Delta's moose population can help conserve this valuable resource.

First Nations people have the legal right to hunt moose anytime along with a cultural responsibility to ensure natural population growth and stability. Responsible hunting includes protecting cow moose because of their vital role in renewing the moose herd. By working together to control harvests and record the impact on the moose population, hunters contribute to the health and wellbeing of our communities for today and into the future.

What You Can Do

- Reduce the harvest of cow moose
- Reduce the amount of moose harvesting between January 1 to August 1. These are critical times of the year when moose are vulnerable or have young with them

What is Being Done

First Nations are doing their part by collecting information on the number of moose killed annually through the *Big Game Harvest Questionnaire* distributed through the Cumberland Delta Moose Management Committee (CDMMC).

All licensed moose hunting has been placed on a Special Draw with limited quotas from a previously open regular bull and calf harvesting system.

Outfitter moose licenses have been reduced. Unused moose licenses are no longer available for other outfitter's to use.

Demonstrating the Importance of Cow Moose

A major factor in moose conservation is avoiding the harvest of cow moose. One cow moose has the potential to add an additional six moose to the herd in only three generations. If you shoot a bull, then only one moose is taken from the herd. If you shoot a cow, then you affect the entire herd in for years to come.



The Cumberland Delta Moose Management Committee



The Cumberland Delta Moose Management Committee (CDMMC) is a model of cooperative interprovincial resource management and has been a catalyst behind various moose management initiatives. The CDMMC's stakeholder groups and First Nations communities are working cooperatively to promote the conservation and preservation of the Cumberland Delta moose population and to raise awareness among hunters about the depleted moose populations. As a funding partner, the Prince Albert Model Forest (PAMF) has provided funding in support of the CDMMC activities over the past three years.

THE CDMMC PARTNERS

- Cumberland House Cree Nation
- Red Earth First Nation
- Shoal Lake First Nation
- Opaskwayak Cree Nation
- Saskatchewan Wildlife Federation
- Saskatchewan Outfitters Association
- Saskatchewan Trappers Association
- Prince Albert Grand Council
- Federation of Saskatchewan Indian Nations
- Ducks Unlimited Canada
- Manitoba Conservation
- Saskatchewan Environment
- Prince Albert Model Forest (Funding Partner)